

Luxury Vinyl Tiles & Planks



Made in India

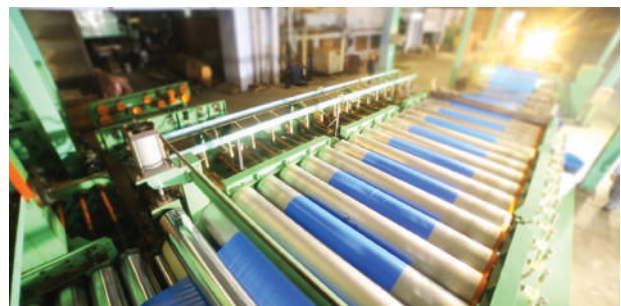


RMG Polyvinyl India Limited, an ISO 9001:2015 systems approved company and is one of the largest manufacturer and exporter of PVC Floor Coverings in India with annual production in excess of 40,000MT (27 Million Sq meters) of residential & heavy duty floorings. Winner of Top Export Award for PVC floor Coverings since several years, the products are exported to Asian countries, Europe, Gulf, Africa and the Americas.

RMG's state-of-the-art plant is located at Sikandarabad (UP) in the Delhi NCR region, the capital of India. The factory boasts of modern calendaring, LVT & cushion vinyl lines to deliver the widest range of flooring products which meet international requirements for abrasion, low smoke & fire retardant properties.

The factory also produces PVC leather, PVC Films & PVC Geomembranes.

RMG's flooring is marketed in India and overseas under the flagship brand WONDERFLOOR. The Wonderfloor product range includes floorings for home interiors, offices, education, healthcare, factories, buses & rail coaches, aerobridges, supermarkets, porta cabins, prefabricated shelters and almost all interior applications.

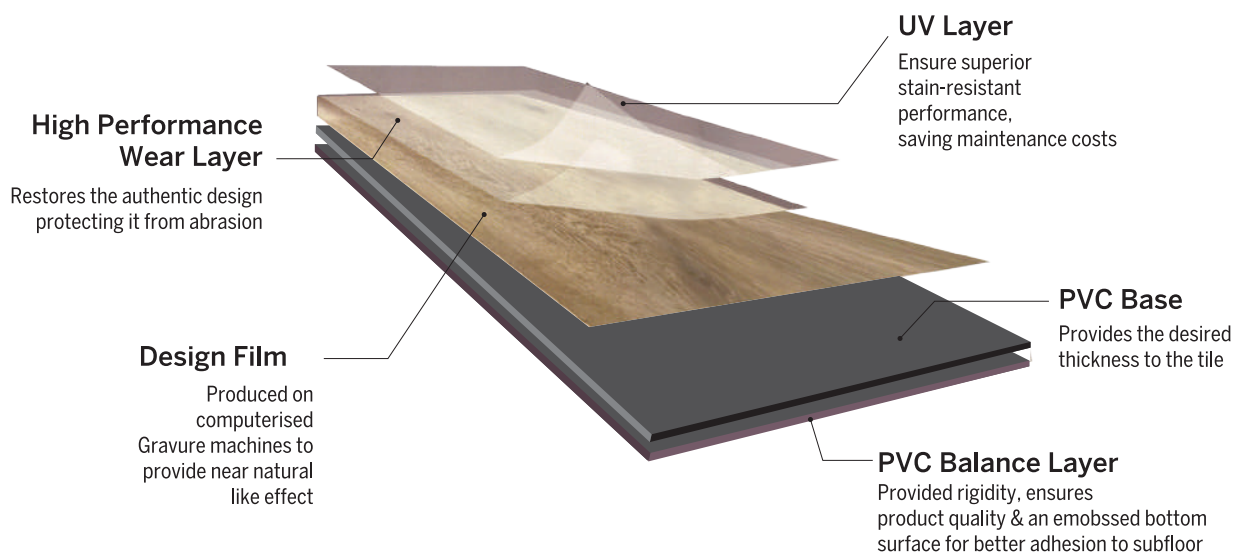


WONDERFLOOR • LUXURY VINYL TILES & PLANKS

Wonderfloor LVT are the latest collection of PVC Tiles & Planks. The shades and designs are carefully chosen to complement the natural wood and stone finish. Wonderfloor LVT is designed to replicate hard surface flooring materials such as stone or wood. Available in planks or tiles, LVT uses a realistic photographic print film and a clear vinyl layer that opens a wide variety of design concepts.

As the name implies, Wonderfloor LVT look like planks of hardwood or stone floors, they are individual pieces of vinyl (not sheet vinyl).

Wonderfloor LVT's are exceptionally durable, If installed and maintained correctly, it has a long life. With that said, vinyl is a great choice for the rooms in your house, office, hotels, showrooms, shops, portacabins and schools that gets the most foot traffic. Additionally, LVT flooring has a wear layer on its surface that resists scratches and stains and with the addition of the PUR surface treatment maintenance becomes very easy & effortless.



Salient Features: -

- Special PUR surface protection.
- Available in planks & tile sizes
- Reduces noise impact
- No worry for termites and moisture
- Natural wooden and stone surface textures

Application areas:

Office, hotels, malls, schools, shops, residences etc.

Available thickness:

1.50 mm, 2.00 mm, 3.00 mm & 4.00 mm

Easy to install



Low Maintenance



Stain Resistant



100% Recyclable



Fire Resistant



Termite Resistant



100% Recyclable



Water Resistant

WONDERFLOOR - LVT

Available Product Range:- We at Wonderfloor produce a range of Luxury Vinyl Tiles and Planks depending on its thickness, wear layer, top surface treatment and area of application and salient features of each of them is mentioned herebelow.

All the qualities are available in Planks & Tiles. The wooden designs are produced in Planks and the stone & granite designs are produced in Tiles sizes.

Timberland - Maestro

Maestro is available in 3.0 mm thickness with 0.30 mm wear layer. The wear layer of 0.30mm is most suited for heavy duty applications and is recommended for applications like hotel corridors, airconditioned shops, factories with clean room conditions, banquet halls, large offices, etc. The 3.00mm thickness also ensures that under floor undulations are subdued so as to enhance the aesthetic appearance. The product is with PUR surface treatment which enhances features such as - scratch resistance, dust repellent and easiness to clean. The all around sharp edges ensure a near invisible joint once flooring has been properly installed on the floor.

Thickness: 3.00 mm (0.30 mm) With UV
 Packing: 16 tiles per box (2.23 sq-mtr)
 Loadability: 2016 Boxes per 20' container
 Usage: Factory, Shopping Malls, Hotels etc

Timberland - Exotica

Exotica is available in 2.0 mm thickness with 0.20 mm wear layer. The product is also treated with PUR surface protection and can be recommended for semi- commercial applications like offices, smaller shops, homes & hotel rooms. The 0.20mm wear layer is suitable for medium duty traffic and the PUR surface treatment ensures very easy maintenance. The sharp edges ensure a near invisible joint once flooring is installed professionally.

Thickness: 2.00 mm (0.20 mm) With UV
 Packing: 24 pcs / box (3.34 sq mtr)
 Loadability: 2036 Boxes per 20' container
 Usage: Offices, Schools, Hotels and Porta Cabins etc

Timberworld

Timberworld is a substitute range of Timberworld - Exotica in 1.50 mm thickness & 0.15 mm wear layer.

The product is recommended for light duty use and residential areas. The thinner wear layer & reduction in total thickness helps in reducing the cost and is recommended for applications with low traffic. This product also comes with PUR surface protection for easiness in cleaning so maintenance wise or aesthetically, the product is at par with thicker qualities.

Thickness: 1.50 mm (0.10 mm) With UV
 Packing: 24 pcs / box (3.34 sq mtr)
 Loadability: 2694 Boxes per 20' container
 Usage: Offices, Houses, Exhibition booth, Small Shops and Prefab Houses etc

Durofloor - LVT

Durofloor-LVT is an special range suitable for economical or low budget projects. This product is available in 1.50 mm thickness with 0.10 mm wear layer. This product is most suitable where interiors have to be revamped within a tight budget. We recommend Durofloor-LVT for Exhibition booths, porta cabin, labour camps, temporary installations, homes, etc.

Thickness: 1.50 mm (0.10 mm) Without UV
 Packing: 24 pcs / box (3.34 sq mtr)
 Loadability: 2694 Boxes per 20' container
 Usage: Prefab Houses, Low budget projects, Labour camps, Exhibition booth etc

AVAILABLE COLOUR OPTIONS



991101



991102



991201



991202



991301



991302



991303



991305



991306



991307



991401



991402



991403



991404



991405



991501



991502



991503



991504



991505



991506



991601



991602



991603



991604



991605



991606



991701



991702



991703



991801



991901



992001



992002



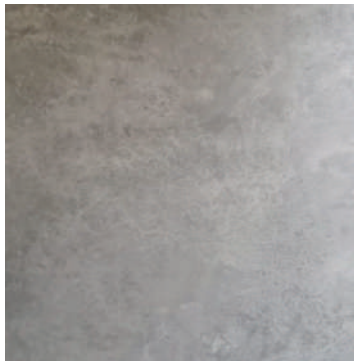
992003

Luxury Vinyl Tiles in Granite & Stone Shades

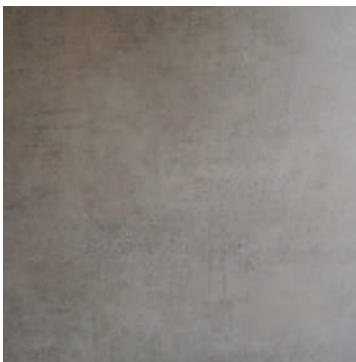
Application areas: Hotels, Offices, Schools
Commercial buildings & Houses



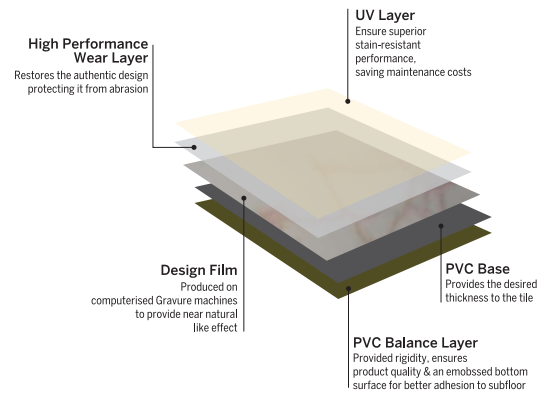
Pearl



Oceano Gris



Slate



Tile Size:

300mm x 300mm

450mm x 450mm

Packaging:

25 tiles per box for 3.0mm

50 tiles per box for 1.50 & 2.0mm



Low Maintenance



Stain Resistant



100% Recyclable



Fire Resistant



Termite Resistant



Eco Friendly



Water Resistant

AVAILABLE SIZES

PLANKS



914.4mm

152.4 mm



914.4mm

288.6 mm

TILES



450 mm

450 mm



300 mm

300 mm



Low Maintenance



Stain Resistant



100% Recyclable



Fire Resistant



Termite Resistant



Eco Friendly



Water Resistant

AVAILABLE TOP EMBOSSING

WOOD



L-701 Wood Grain



L-702 Antique Wood



L-703 Silk

STONE/GRANITE



L-703 Silk



L-704 Stone



Low Maintenance



Stain Resistant



100% Recyclable



Fire Resistant



Termite Resistant



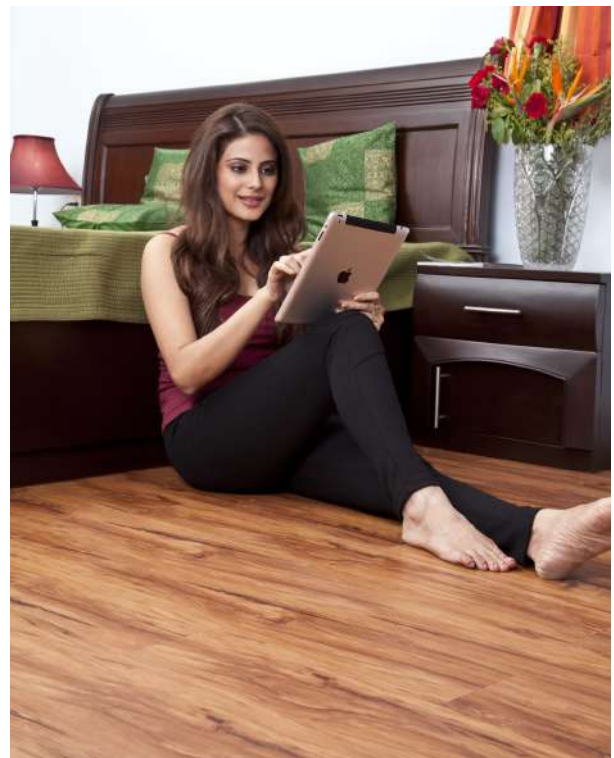
Eco Friendly



Water Resistant

LVT - INSTALLED AT:

- Manas Resort - Igatpuri
- Dhirubai International School - BKC
- Bank Of Baroda Staff Quarters - BKC.
- Abhay International School - Vikroli
- Pravatibai Chavan Hospital - Kandivali
- ACE Heart Clinic - Borivali
- Makoons Pre School - Mira Road
- Ashvin Chinubai Broking Pvt Ltd - Colaba
- Army CSD Canteen - Dharmshala
- PGI Nuclear Deptt - Chandigarh
- Octane Fitness Gym - Chandigarh
- DPS School - Nangal
- United Phosphorous Ltd, Township - Ankaleshwar, Gujarat
- Guwahati Airport
- Fab hotel - Delhi
- Global Gymnasium - Noida
- Jain Orthopedic Clinic - Delhi
- MAII Institute - Delhi
- Klay Pree School - Gurgaon
- Ek Batta Do Architect - Rudrapur, UK
- Junior Pathshala School-Greater Noida
- LIC OFFICE - Varanasi
- Color Plus Showroom - Lucknow
- Methadox-Lucknow



PERFORMANCE CHARACTERISTICS

CHARACTERISTICS	TIMBERWORLD	TIMBERLAND EXOTICA	TIMBERLAND MAESTRO	DUROFLOOR
TYPE OF FLOORING	RESILIENT FLOORING	RESILIENT FLOORING	RESILIENT FLOORING	RESILIENT FLOORING
OVERALL THICKNESS (mm)	1.50	2.00	3.00	1.50
DIMENSION (SIZE)	152.4mm X 914.4mm (6" X 36")	152.4mm X 914.4mm (6" X 36")	152.4mm X 914.4mm (6" X 36")	152.4mm X 914.4mm (6" X 36")
SQAURENESS	≤ 0.25 mm	≤ 0.25 mm	≤ 0.25 mm	≤ 0.25 mm
WEAR LAYER	0.10mm (HEAVY DUTY)	0.20 (HEAVY DUTY)	0.30mm (HEAVY DUTY)	0.10mm (HEAVY DUTY)
DENSITY	2950 g/m ²	3500 g/m ²	5250 g/m ²	3000 g/m ²
DIMENSIONAL STABILITY	≤ 0.25 %	≤ 0.25 %	≤ 0.25 %	≤ 0.25 %
RESIDUAL INDENTATION	≤ 0.10 mm	≤ 0.10 mm	≤ 0.10 mm	≤ 0.10 mm
FLEXIBILITY	NO CRACKING USING 20 mm MANDREL	NO CRACKING USING 20 mm MANDREL	NO CRACKING USING 20 mm MANDREL	NO CRACKING USING 20 mm MANDREL
COLOR FASTNESS	CLASS 6	CLASS 6	CLASS 6	CLASS 6
FIRE RATING	Bfl-S1	Bfl-S1	Bfl-S1	Bfl-S1
HORIZONTAL & VERTICAL BURNING TEST	PASS (ARAI)	PASS (ARAI)	PASS (ARAI)	PASS (ARAI)
PERFORMANCE CLASSIFICATION	31/32	34/41	34/43	31/32
ABRASION RESISTANCE	WEAR GROUP P	WEAR GROUP P	WEAR GROUP T	WEAR GROUP T
SOUND ABSORPTION	ΔLW=5db	ΔLW=4db	ΔLW=4db	ΔLW=5db
SLIP RESISTANCE	R9	R9	R9	R9
BEARING CASTOR CHAIR	SUITABLE / CONTINUOUS USE	SUITABLE / CONTINUOUS USE	SUITABLE / CONTINUOUS USE	SUITABLE / CONTINUOUS USE
SURFACE PROTECTION	PUR	PUR	PUR	NA
PATTERN	WOOD and CLASSIC	WOOD and CLASSIC	WOOD and CLASSIC	WOOD and CLASSIC
NO. OF PCS PER BOX & AREA OF BOX	24 PCS / BOX = 3.34 SQM/ BOX	24 PCS / BOX = 3.34 SQM/ BOX (EXOTICA)	16 PCS / BOX = 2.23 SQM/ BOX	24 PCS / BOX = 3.34 SQM/ BOX



MAINTENANCE

Do's:

- After laying of flooring, the surface should be cleaned daily with damp mop and weekly or fortnightly with soap solution
- Prevent point load indentation by covering your furniture legs with rubber stopper caps
- To remove stubborn stains, rub the affected area immediately with a soft coir brush or fine steel wool soaked in a warm soap solution
- Scuff marks on the floor can be removed with little application of diesel
- Use door coir or suitable mats to minimize accumulation of dust on Wonderfloor vinyl flooring
- Use water to remove any chemical spill on flooring.

Don'ts:

- Do not use any strong detergent, harsh cleaning agent or dry steel wool
- Throwing of lighted cigarette butts or match sticks on the floor should be avoided as it could lead to burn marks on the floor
- Do not drag any heavy object or furniture on the flooring to avoid scratches on the floor.

For export enquiries, please e-mail : info@rmgpoly.com

or call : +91 9873138885 / +91 9953208740

For institutional/bulk enquiries, please e-mail : mkt@rmgpoly.com

or call : +91 9711200510

RMG POLYVINYL INDIA LIMITED

Registered Office : UGSR 4, Ansals Plaza, Sector 1, Vaishali Ghaziabad 201 010, (U.P) INDIA. Tel.: +91

120-4284802/803/804/805/806.

Fax: +91 11 66173679. E-mail: info@rmgpoly.com

Regional Offices :

- Ahmedabad • Bangalore • Bhubaneswar • Chennai • Chandigarh • Guwahati • Hyderabad • Indore • Kolkata • Kochi
- Lucknow • Mumbai • Pune • Patna

WONDERFLOOR is the registered Trade Mark of RMG Polyvinyl India Limited www.wonderfloor.com

