



Scan this QR Code
to visit website

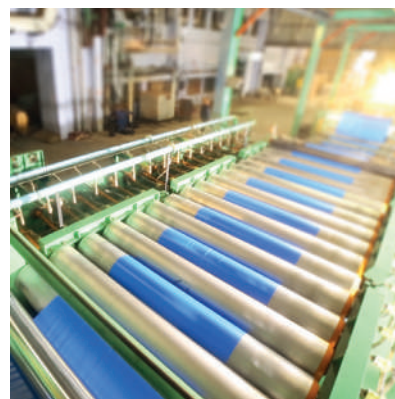
2026
EDITION

WONDER BOOK



WONDERFLOOR

www.wonderfloor.co.in



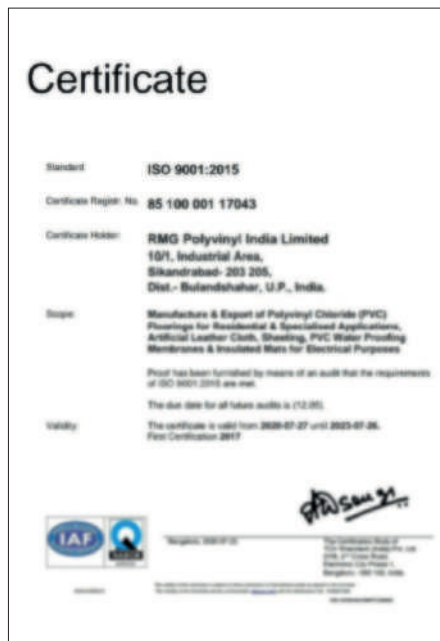
ABOUT US

RMG is India's leading manufacturer of vinyl flooring under the brand WONDERFLOOR in India. We have a robust dealer/distributor network PAN India and we are exporting our goods to 25+ countries.

We have 2 manufacturing units near Delhi & Chennai, which are equipped with modern machines, our constant research and development allows us to supply superior-quality products with high-efficiency rates. Our company is the recipient of TOP PLASTICS EXPORTER Award from Govt. of India since the last 16 years and the manufacturing units produce in excess of 40+ Million sq mtr of flooring annually.

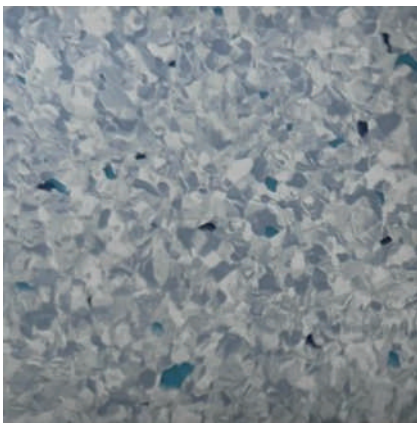


SCAN TO
VISIT OUR
WEBSITE

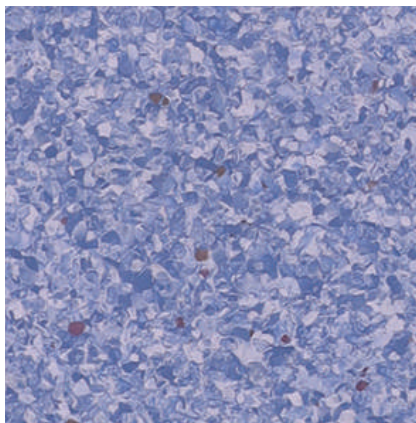


ADVENTUS

High Performance Homogeneous Flooring



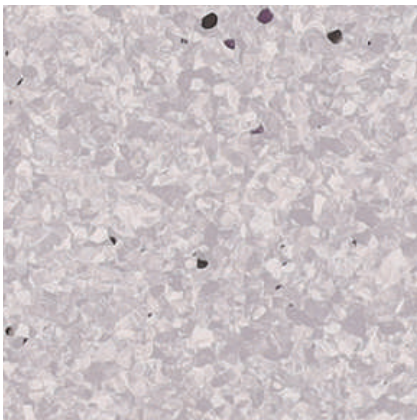
STEEL BLUE



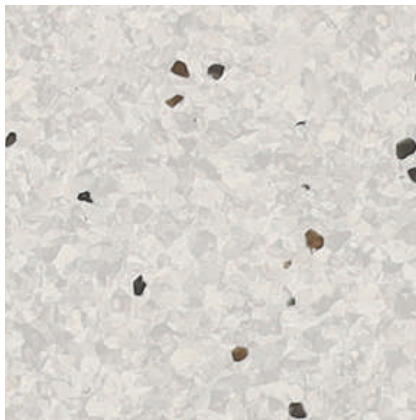
BLUE ICE



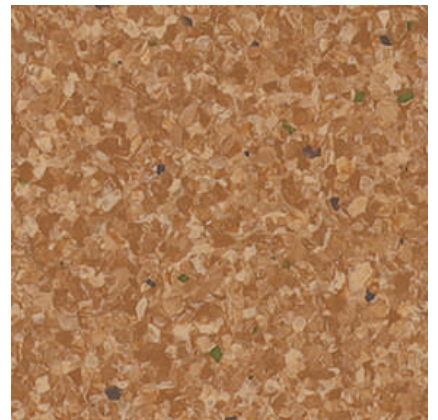
CORN



CLOUDY GREY



PEARL WHITE



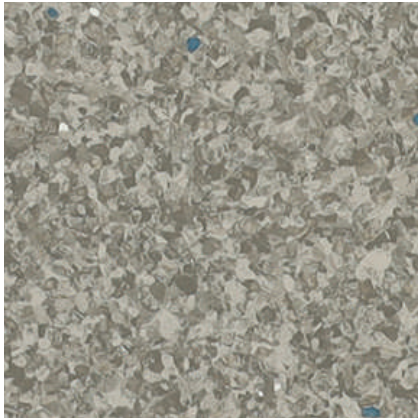
CAPPUCCINO



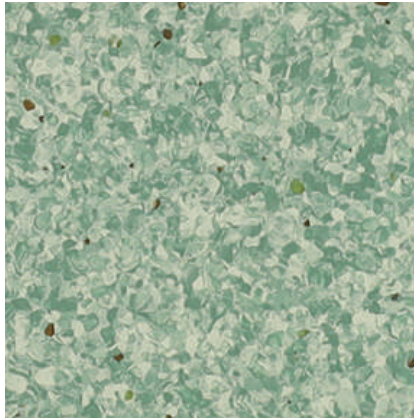
Disclaimer - Sample shown is for reference only, actual product may vary in shade and appearance.

ADVENTUS

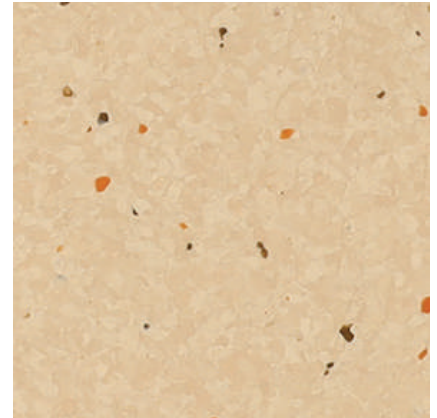
High Performance Homogeneous Flooring



SLATE GREY



SPRING GREEN



VANILLA



RUSTY GOLD



Thickness: 2mm

Availability: In Sheets (2 mtr x 20 mtr)

SALIENT FEATURES

- High performance flooring
- Homogeneous single layered
- Non-directional design
- PUR surface guard for ease in maintenance and resistance against scratches scruff marks & stains
- Wear group **T** for superior performance
- Anti bacterial / Anti fungal

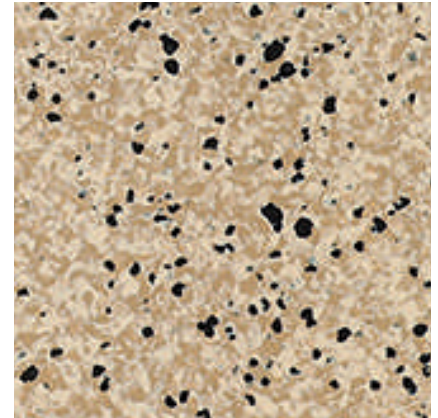
APPLICATION AREAS:

Hospitals, Pharmaceutical Units, Super markets, Schools, Auditoriums, Library, Large public area, Clean rooms etc.

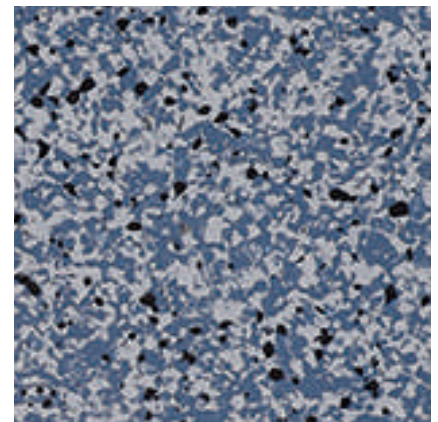


Scan this QR Code
to visit Adventus page
on Wonderfloor website

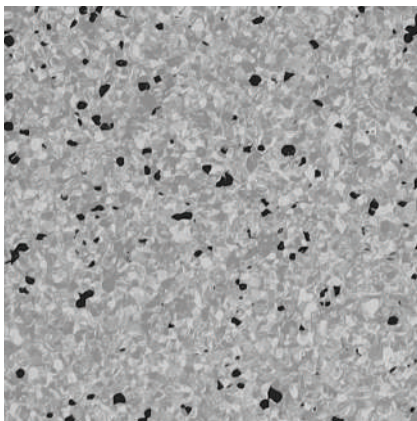
Disclaimer - Sample shown is for reference only, actual product may vary in shade and appearance.



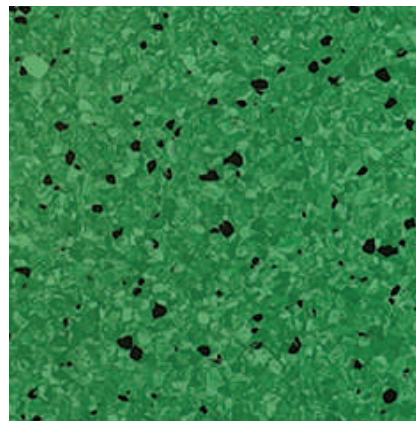
BEIGE



NEW BLUE



NEW GREY



P GREEN

Thickness: 2mm

Availability: In Sheets (2 mtr x 20 mtr)

SALIENT FEATURES

- Homogeneous single layer conductive flooring
- Non directional design
- High quality static control
- Stable and permanent conductivity
- Electrical resistance: 5×10^4 ohms to 10^6 ohms
- Anti-bacterial and fungicidal
- Wear Group P

APPLICATION AREAS:

Operation theatre, ICU, Server rooms, X-ray rooms, CAT scan/ MRI, Data centers, Electronic manufacturing, Explosives/ammunition units, Clean Rooms etc.



Scan this QR Code
to visit Orbit page
on Wonderfloor website



AQUA BLUE



MINT GREEN



MUDDY BEIGE





MYSTIC GREEN



PEARL



RUBY BLUE



SMOKE GREY



STEEL GREY



TANGERINE



Thickness: 2mm (1.50mm/3.00mm against bulk order)
Availability: In Sheets (1.50 mtr x 20 mtr)

SALIENT FEATURES

- Homogeneous, hard wearing
- Random marbled pattern in pastel shades
- Smooth surface for easy cleaning
- Anti bacterial and fungicidal
- PUR surface protection for ease in maintenance with stain resistance
- Fire retardant & Low smoke
- The flooring can be made seamless by way of thermal welding
- "T" rating for best performance

APPLICATION AREAS:

Hospitals (Pre & post care), Blood banks, Pathology lab, Clean rooms,
Pharmaceuticals (sterile & production area), Food industry etc



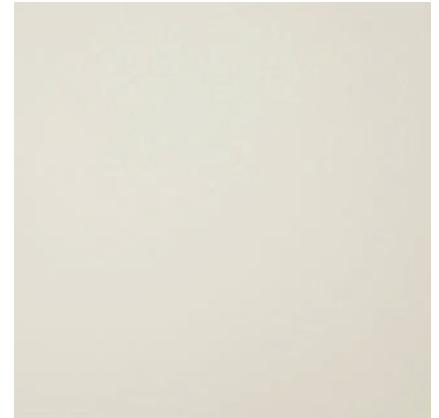
Scan this QR Code
to visit Sigma page
on Wonderfloor website

WALLSPRO+

Flexible Anti-Bacterial Wall Covering



ROSE WHITE



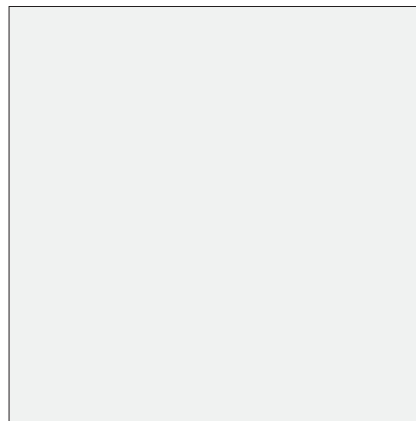
IVORY



FOREST GREEN



NEO BLUE



ROSE WHITE



Thickness: 1.20 mm

Availability: In Sheets (2 mtr x 15 mtr)

SALIENT FEATURES

- Impact resistance
- Anti Static
- Anti-bacterial and fungicidal
- Available in range of soothing pastel shades
- PUR surface protection for ease in maintenance with stain resistance
- Glass Fibre Impregnation to provide high dimensional stability
- Wear Group M

APPLICATION AREAS:

Hospitals, Dispensaries, Pharmaceutical industries, Laboratories, Blood banks, Stores, Restaurants, Kitchens, Schools, others etc



Scan this QR Code
to visit Wallspro page
on Wonderfloor website

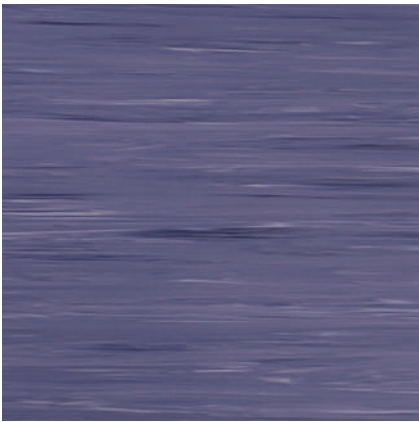
Disclaimer - Sample shown is for reference only, actual product may vary in shade and appearance.

ROBUST

Commercial Flooring



OYSTER



BLUE WATER



CAROLINA BLUE



MERCURY



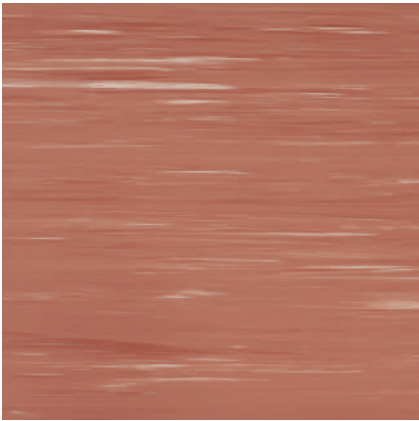
FLORIDA



AMBER



DESERT SAND



LEE COOPER



Disclaimer - Sample shown is for reference only, actual product may vary in shade and appearance.

ROBUST

Commercial Flooring



CORAL FEAST



SAFFRONY



EMERALD GREEN



ICE LAND



ICEBERG



Thickness: 1.00mm / 1.50mm / 2.00mm / 3.00mm
Availability: In Sheets (1.50/2 mtr x 15/20 mtr)

SALIENT FEATURES

- Robust office flooring is 'P' rated and have a slip resistance of R9
- The floorings are embossed with "Raindrop" embossing design which enables quick cleaning & easy maintenance.
- Robust is available with PUR surface protection providing resistance against scratches & dirt accumulation and also ensures quick cleaning/ mopping
- Can be thermo welded for joint free installation

APPLICATION AREAS:

Offices, Shops, Factories, Porta Cabins, Auditoriums, Schools, Libraries, Healthcare etc.



Scan this QR Code
to visit Robust page
on Wonderfloor website

Disclaimer - Sample shown is for reference only, actual product may vary in shade and appearance.

DUROFLOOR

Heavy Duty Flooring



ALMOND BROWN



CITRUS YELLOW



TANGO ORANGE



TERRACOTTA



SIGNAL RED



SEA GREEN



BLACK



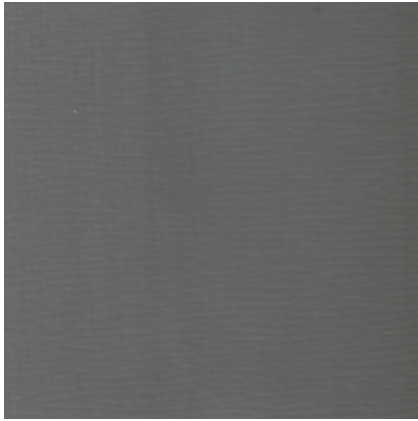
LIGHT GREY



Disclaimer - Sample shown is for reference only, actual product may vary in shade and appearance.

DUROFLOOR

Heavy Duty Flooring



ASH GREY



LILLY WHITE



CAROLINA BLUE



OCEAN BLUE



MARINE BLUE



SUPER CREAM



BEIGE



Thickness: 1.00mm / 1.50mm / 2.00mm / 3.00mm
Availability: In Sheets (2 mtr x 20 mtr)

SALIENT FEATURES

- Durofloor is '**M**' rated flooring with slip resistance of R9
- Available in a wide range of shade
- Ideal for moderate footfalls
- A cost effective economic flooring solution
- Sound absorption quality

APPLICATION AREAS:

Porta Cabins, Pre-fabricated structure, Low budget projects, Warehouse, Labour camps, Shop floors, etc



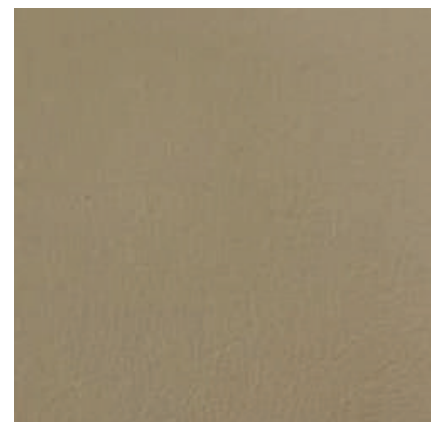
Scan this QR Code
to visit Durofloor page
on Wonderfloor website

DUROWALL

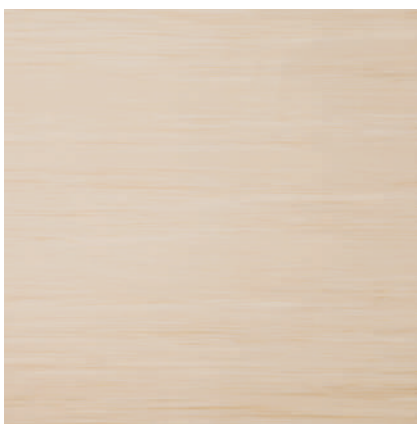
Wall Covering



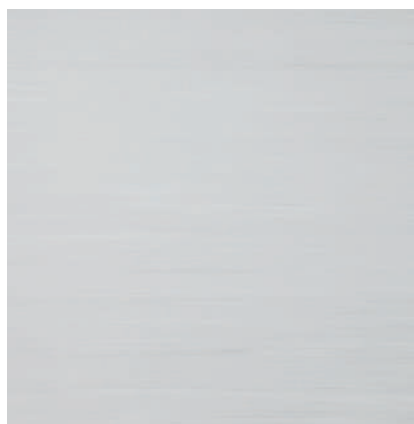
MINT GREEN



G-BEIGE



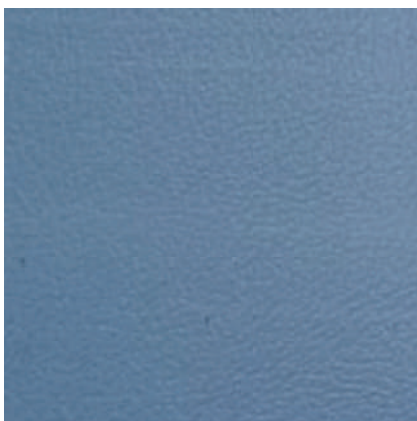
PEARL



STEEL GREY



STEEL GREY



AZURE



Thickness: 1.00mm
Availability: In Sheets (2.0 mtr x 20 mtr)

SALIENT FEATURES

- Ease of integrated with the floor with thermal welding for maintaining clean room conditions
- No stains and low maintenance
- Easy to clean
- Available in cool pastel shades.

APPLICATION AREAS:

Prefab Houses, Labour Camps, Porta Cabin, Labour Camps and Wet areas of Stores, Restaurants, Kitchens, School, others etc.

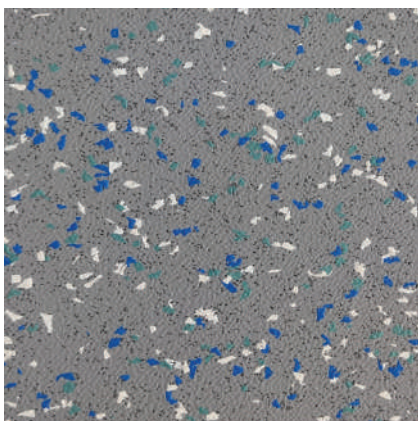


Scan this QR Code
to visit Adventus page
on Wonderfloor website

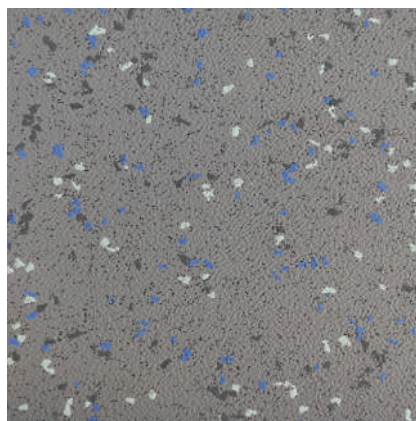
Disclaimer - Sample shown is for reference only, actual product may vary in shade and appearance.

TRACTION

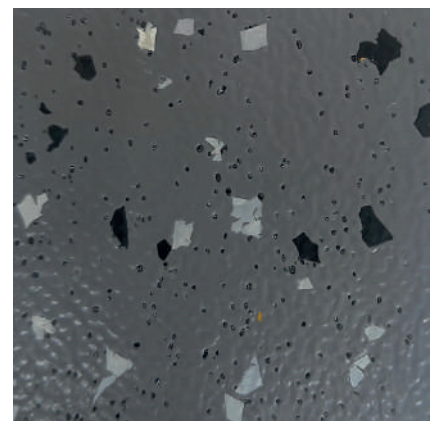
Anti-Slip Safety Flooring



EC GREY



KL GREY



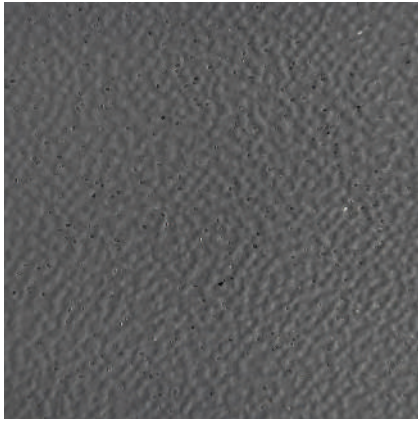
T GREY



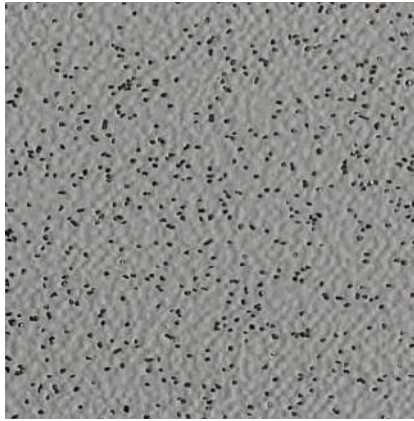
Disclaimer - Sample shown is for reference only, actual product may vary in shade and appearance.

TRACTION

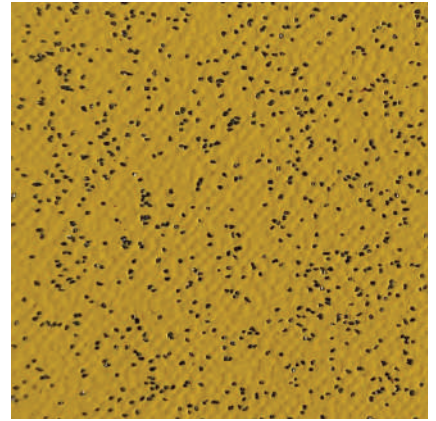
Anti-Slip Safety Flooring



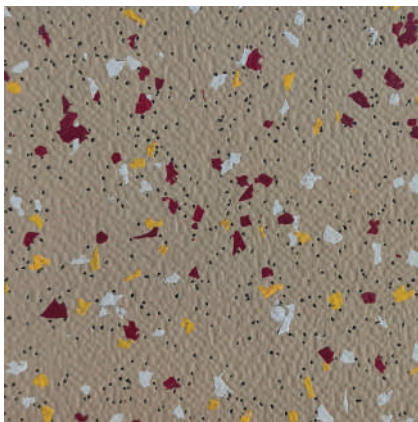
SPARKLE GREY



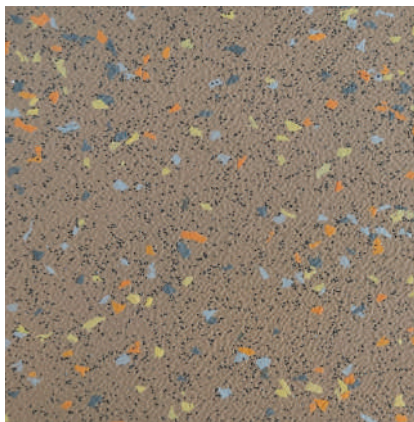
SPARKLE LIGHT GREY



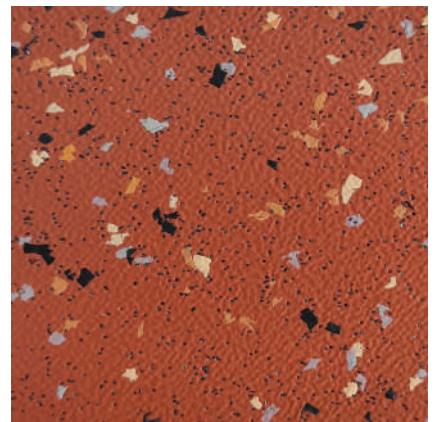
SPARKLE YELLOW



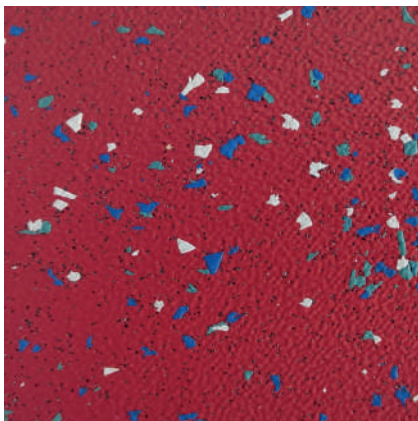
SR BEIGE



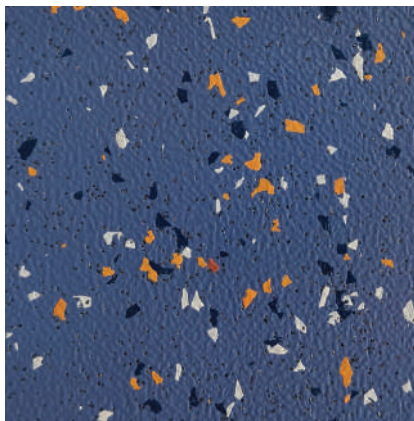
SANDY BROWN



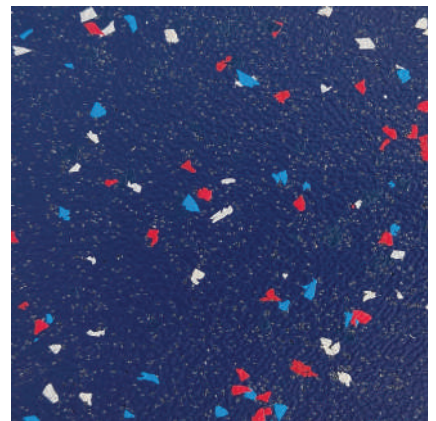
TERRACOTTA



CRIMSON RED



SHATABDI BLUE



N BLUE



Thickness: 2mm

Availability: In Sheets (2 mtr x 20 mtr)

SALIENT FEATURES

- Produced as per ISO requirements and with Fire & Smoke emission requirements which are most important for the transport industry
- Product is “T” rated due to its very high abrasion resistance properties
- Slip Resistance of R11 & R12 can be achieved depending upon the top embossing selected
- Available in Plain colours or with Multi-Coloured Chips and also with Glass Scrim Reinforcement for very high Dimensional Stability

APPLICATION AREAS:

Transport sector like Buses, Trains, Lifts, Loading Ramps, Walk ways, Wet Areas, etc

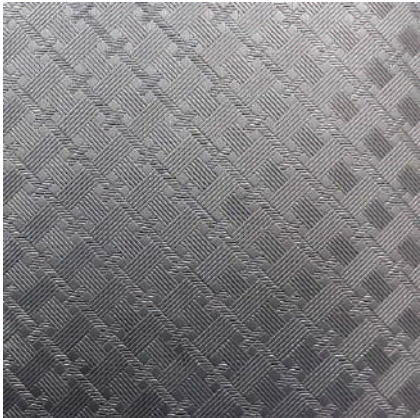
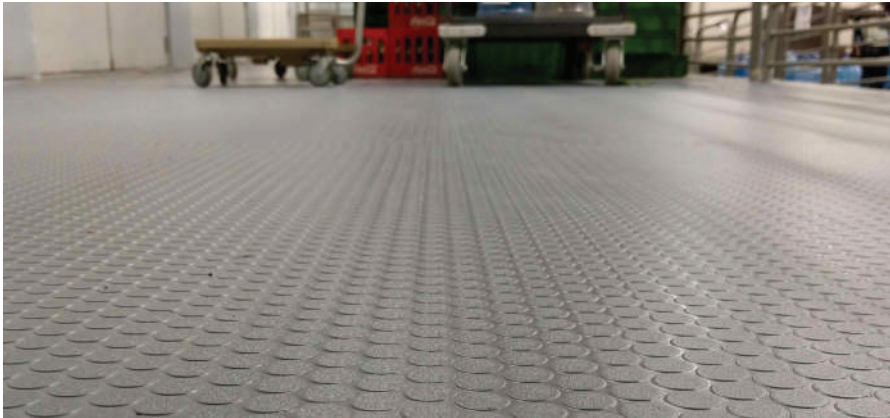


Scan this QR Code
to visit Traction page
on Wonderfloor website

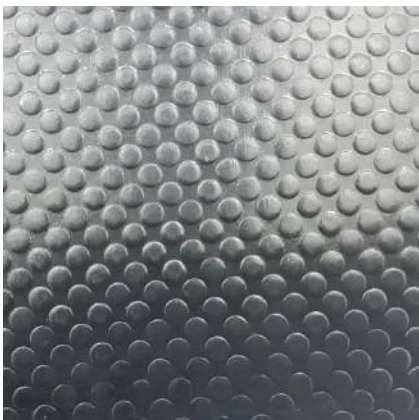
Disclaimer - Sample shown is for reference only, actual product may vary in shade and appearance.

MATRIX

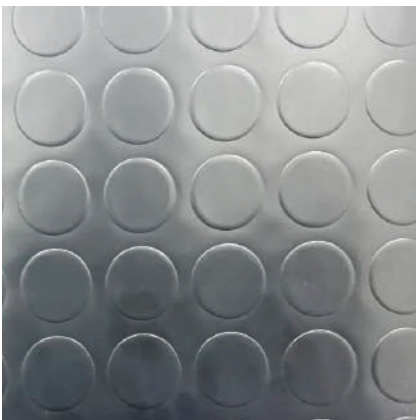
Transport Flooring



EMB 147



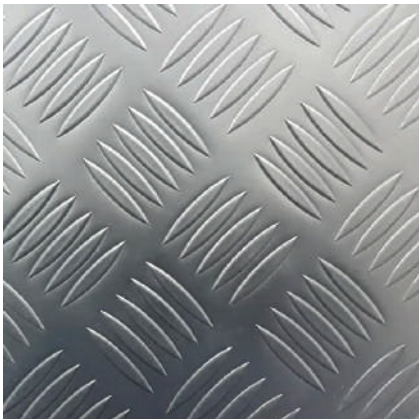
EMB 160



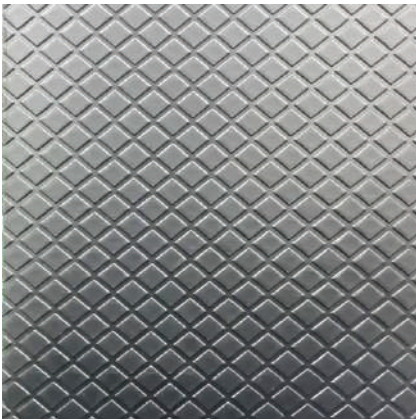
EMB 195



EMB 216



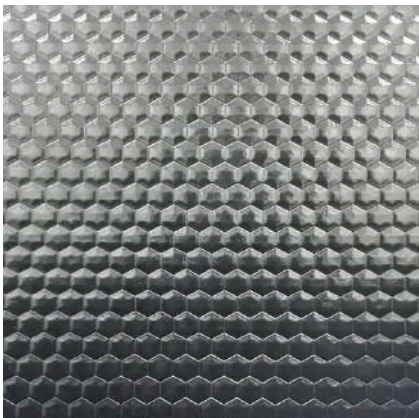
EMB 220



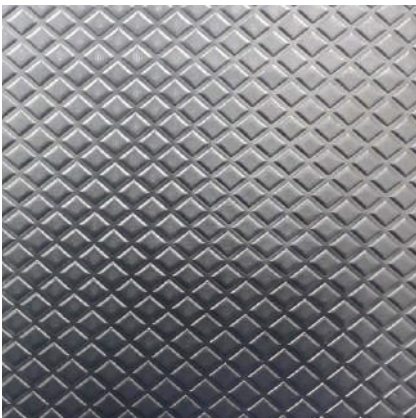
EMB 250



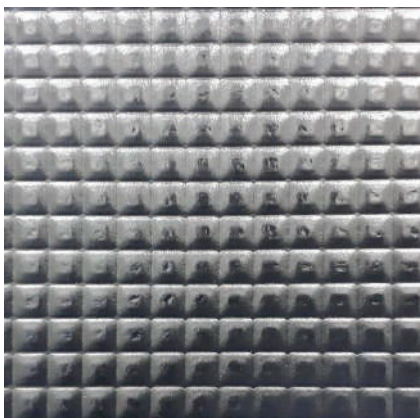
EMB 253



EMB 254



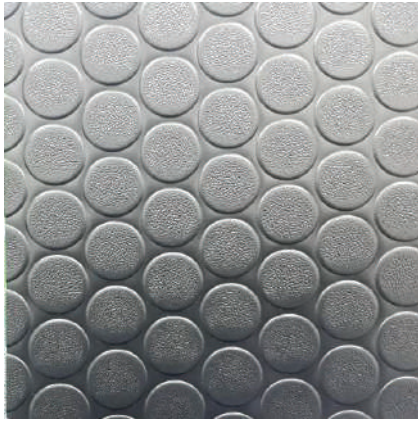
EMB 255



EMB 259



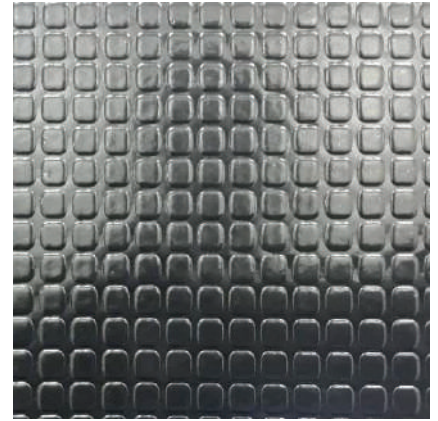
Disclaimer - Sample shown is for reference only, actual product may vary in shade and appearance.



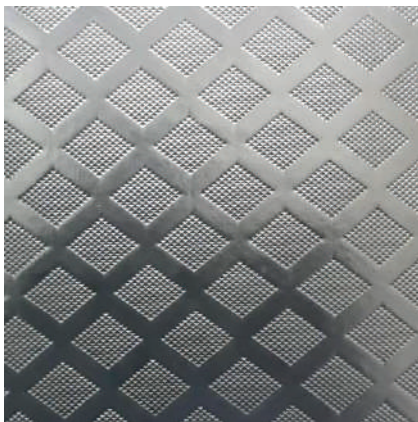
EMB 468



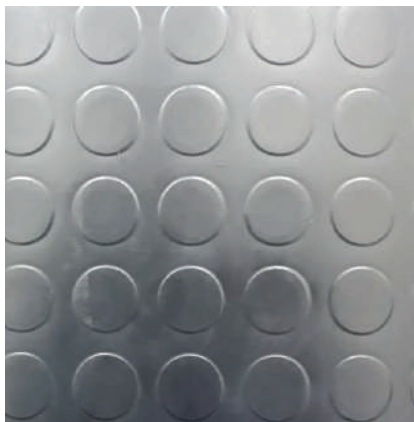
EMB 480



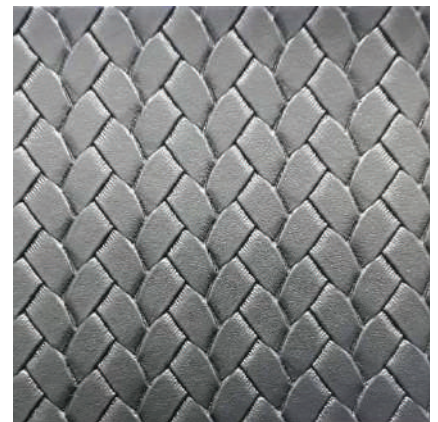
EMB-256



EMB 407



EMB 475



EMB 484



EMB 499



EMB 478



EMB 485



Thickness: 1.0 / 1.20 / 1.5mm / 2.0 mm / 3.0mm

Availability: In Sheets (2.0 / 1.50 mtr, Roll Length: 25 / 20 / 15 linear mtr)

SALIENT FEATURES

- Available in solid colours with homogeneous or heterogeneous type in various embossing on the top layer in pleasant metallic colours, like aluminium, copper, gold, etc or in solid colours like Black, Red, Yellow, etc
- They are 'M' or 'P' rated depending upon the thickness and have a slip resistance of R10
- Product is suitable for sale in Europe and fire safety approvals have been obtained from European labs
- Choice of Colour may be customized on the basis of customer preference
- Matrix is also available with polyester non woven or jute backing which provides enhanced sound and thermal insulation

APPLICATION AREAS:

Trains, Lifts, Loading Ramps, Walk Ways, Wet Areas, etc

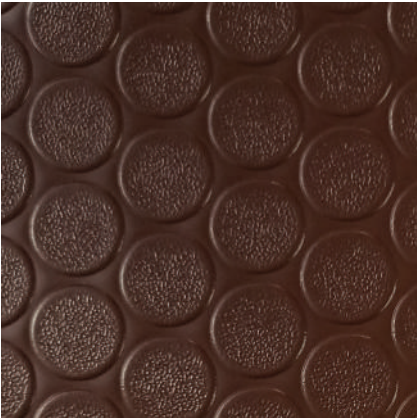


Scan this QR Code
to visit Matrixx
on Wonderfloor website

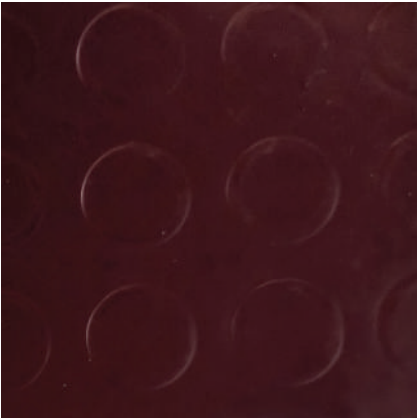
MATRIX

MATRIX Embossed Floorings
are available in the following colours

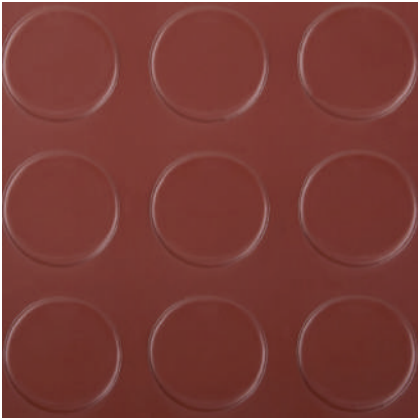
Transport Flooring



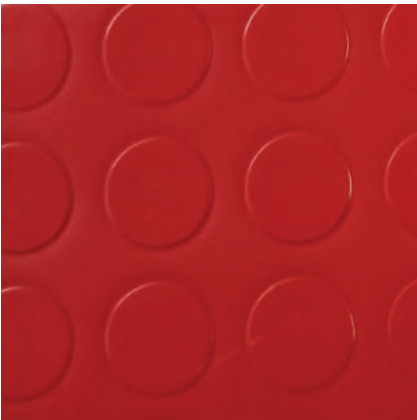
BROWN



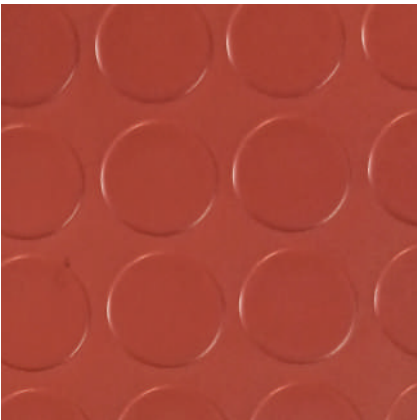
MAROON



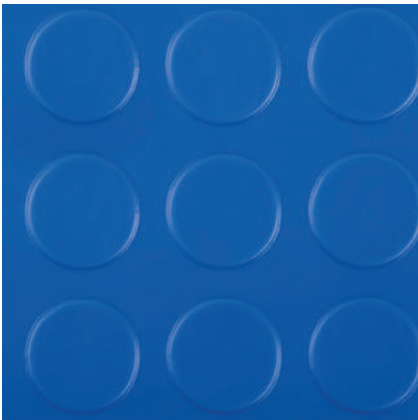
BRICK RED



RED



TERRACOTTA



SKY BLUE



BLUE



OCEAN BLUE



YELLOW



SPARKLE DK GREY



SPARKLE GREY

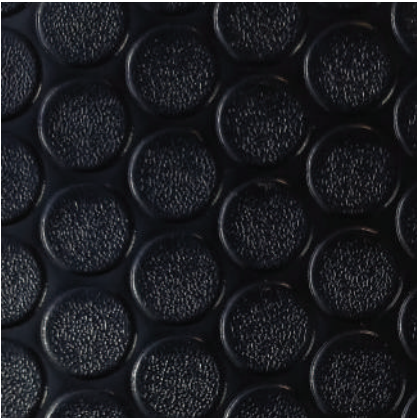


Disclaimer - Sample shown is for reference only, actual product may vary in shade and appearance.

MATRIX

MATRIX Embossed Floorings
are available in the following colours

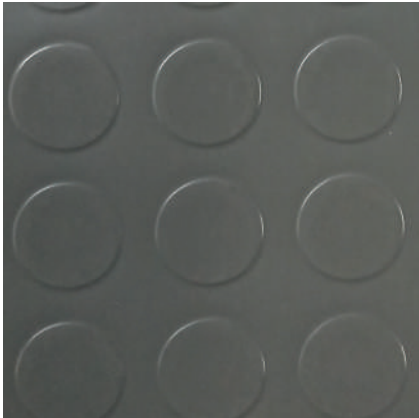
Transport Flooring



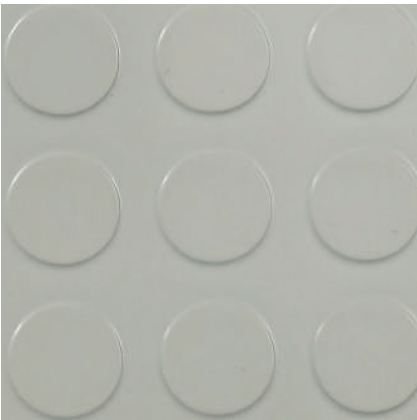
BLACK



DK GREY



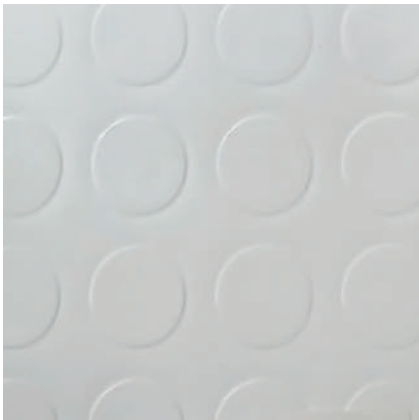
GREY



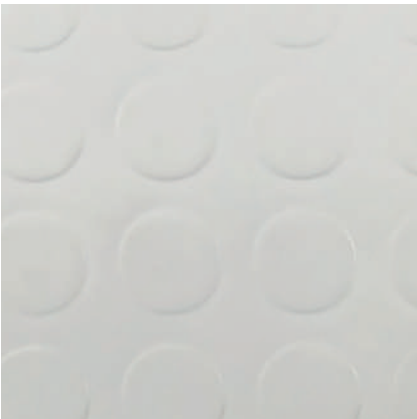
LT GREY



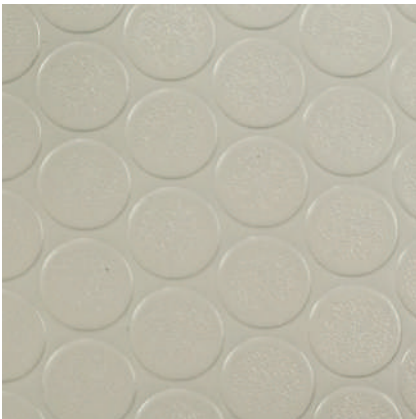
SILVER



PEARL WHITE



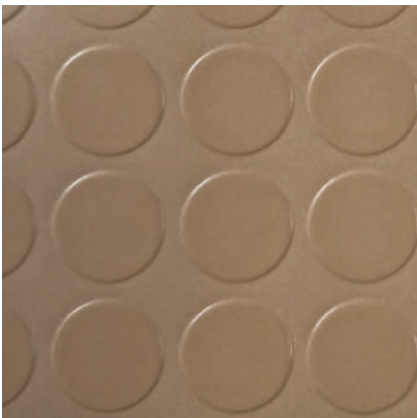
WHITE



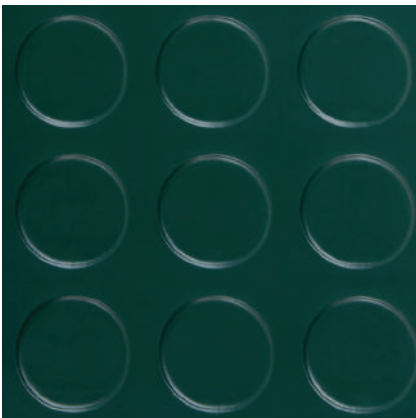
BEIGE



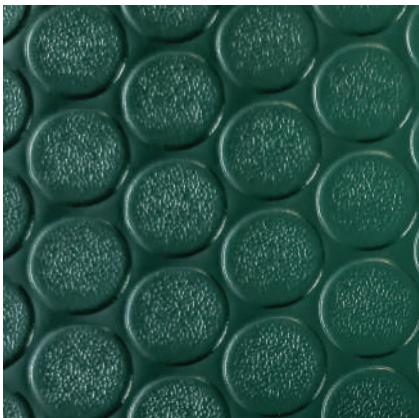
SAND STONE



ALMOND BROWN



FOREST GREEN

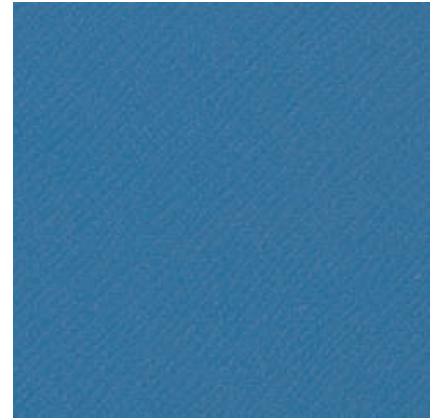


GREEN



Disclaimer - Sample shown is for reference only, actual product may vary in shade and appearance.

ANTISTATIC/ESD FLOORING



N. M. BLUE



ASH GREY



ALMOND BROWN*



GREEN*



Thickness: 2mm

Availability: In Sheets (1.50/2.0 mtr x 15/20 mtr)

Tile Size: 300 X 300 / 305 X 305 / 610 X 610*

SALIENT FEATURES

- Exceptionally high vinyl content increases resistance to abrasion, scratching, soiling and scuffing.
- ANTISTATIC/ESD Flooring is calendared laminated solid, unbreakable and flexible PVC flooring with properties of a high wear resistance and resilience.
- Does not contain asbestos
- Conforms to BS: 2050-1978 & IS-3462-1986.
- Surface Electrical Resistance- Antistatic Flooring: 5×10^{-4} to 5×10^{-8} Ohms
Conductive flooring range upto 5×10^{-4} Ohms

APPLICATION AREAS:

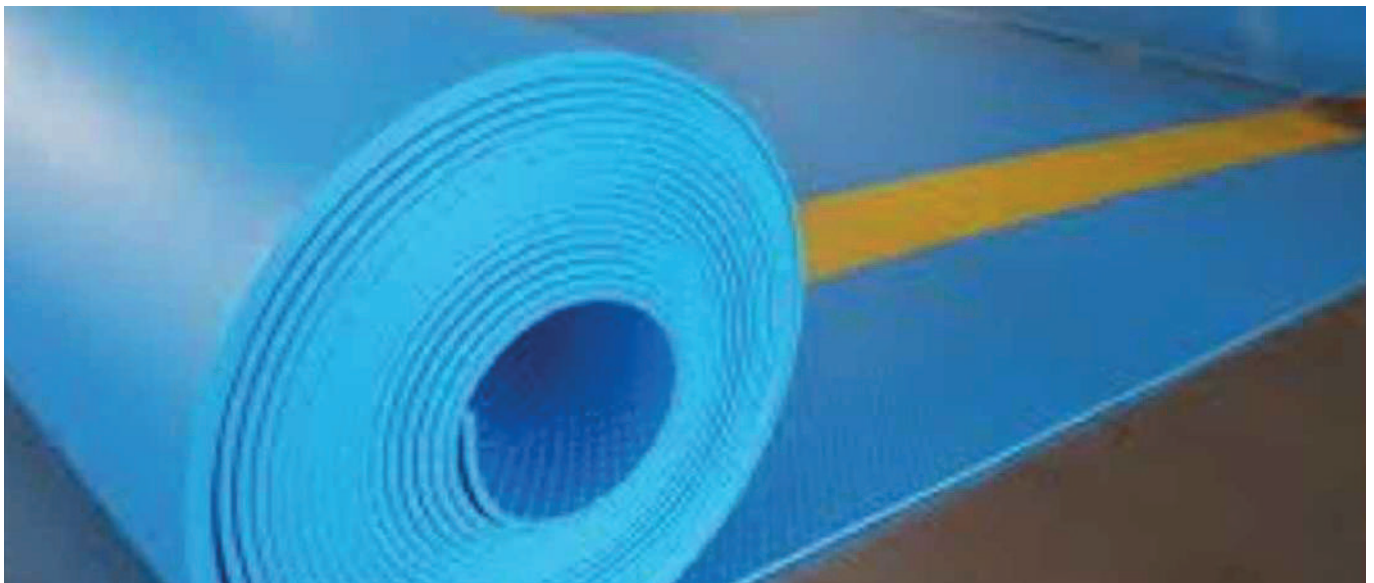
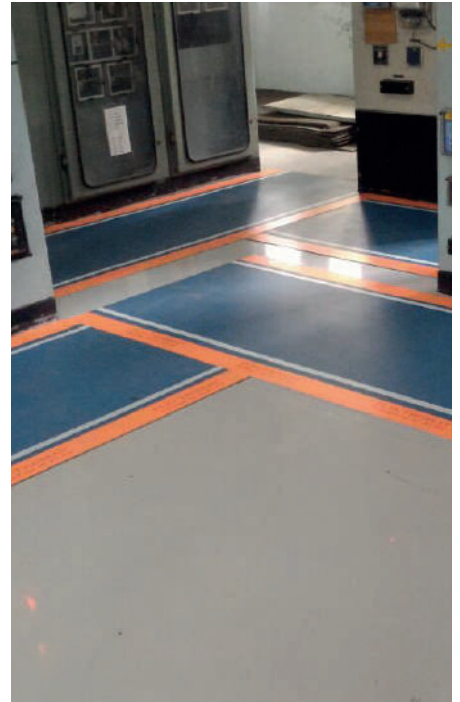
ANTISTATIC Flooring/ESD Flooring is recommended for areas where sensitive electronic equipments, measuring instruments and computers etc. are being used or stores which are likely to get effected. A must for control rooms, radar station, CT scan centers, ICU's & computer rooms, electrical equipment industries, telecom shelters, telephone exchange etc.



Scan this QR Code
to visit ESD / Anti-Static page
on Wonderfloor website

Disclaimer - Sample shown is for reference only, actual product may vary in shade and appearance.

ELECTROMAT[®] HIGH VOLTAGE INSULATING MATS



Thickness: 2.00mm / 2.50mm / 3.00mm
Availability:

SALIENT FEATURES

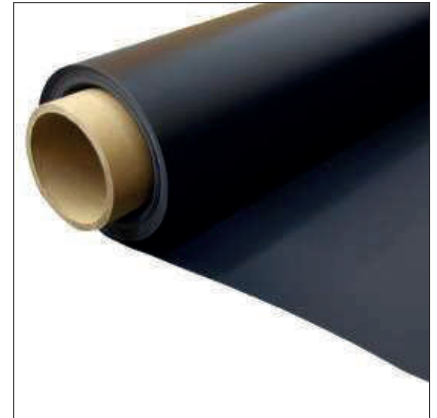
- Embossing: Anti-Skid without metallic derivatives
- Recommended thickness & Voltage:-
- Standard width is 1 meter but can be increased up to 2 meters .
- Material Elastomar
- Can be pasted at the front and rear side of the control panels and other electrical installations.
- The mat can be welded by hot gas welding with filler material, method by making "V" groove cut at joints with suitable welding cord of similar material.
- Safety from electrical shock is required for workmen whether they are involved in Electricity Generation, Transmission, Distribution or its use.

APPLICATION AREAS:

Highly recommended for total safety of workmen from electrical shock when working in or around environment like High Voltage Panels, Sub-station, Power Transformer Rooms, LT & HT Labs, near Busbars, near Control Panels etc.

RHYTHM

Dance Floor



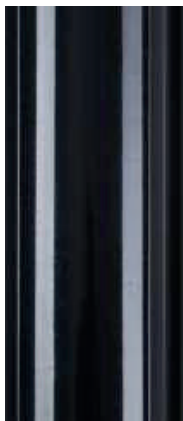
RHYTHM SWING



RHYTHM TWIST



RHYTHM BEATS



RHYTHM TWIST



SALIENT FEATURES

- Light weight and easy to lay due to lay flat properties
- Reversible in nature*
- Available in matte/ glossy finish
- Can be rolled and unrolled at leisure

Rhythm is a thick yet light weight cushion base flooring that are used in studio's and dance halls. They are commonly known as "show floors". They are impregnated with a glass fiber tissue that provides lay flat properties and ensures high dimensional stability. They are available in solid colors with a choice of matte or glossy finish. The rolls are easy to lay and they can be rolled and unrolled several times. Rhythm can also be customized to make the flooring "reversible" and hence can be used from both the sides.

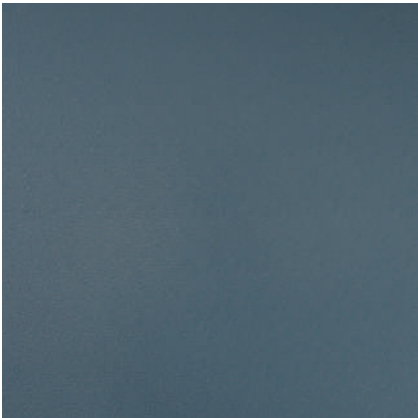
Disclaimer - Sample shown is for reference only, actual product may vary in shade and appearance.



Scan this QR Code
to visit Rhythm page
on Wonderfloor website



ACE 091 CHERRY RED



ACE 092 BLUE



ACE 093 ORANGE



BRAAVO

Sports & Fitness Flooring



ACE 094 GREEN



LIGHT GREY



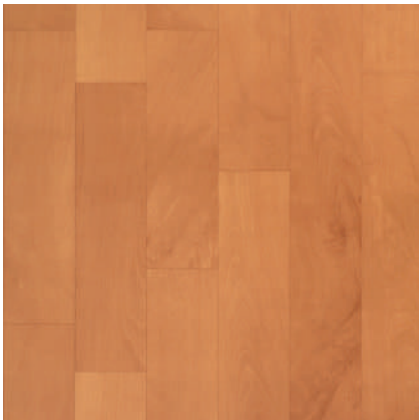
ACE 096 YELLOW



ACE 097 IRON GREY



AR 051



AR 053



AR 054



AR 055



AR 056



AR 057



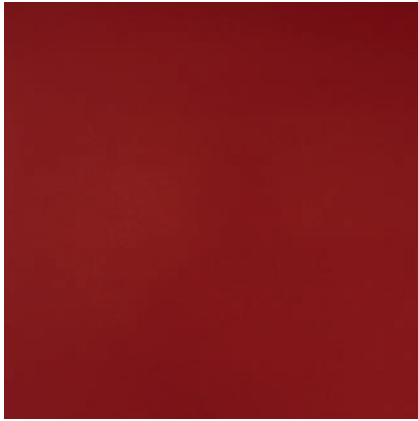
SPT 081 CAPRI BLUE



SPT 082 MEADOWS GREEN



Disclaimer - Sample shown is for reference only, actual product may vary in shade and appearance.



ELITE RED 081



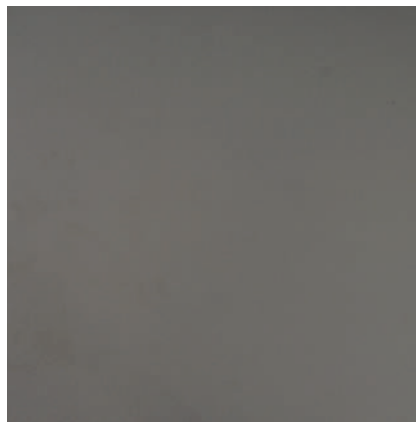
ELITE BLUE 082



ELITE ORANGE-083



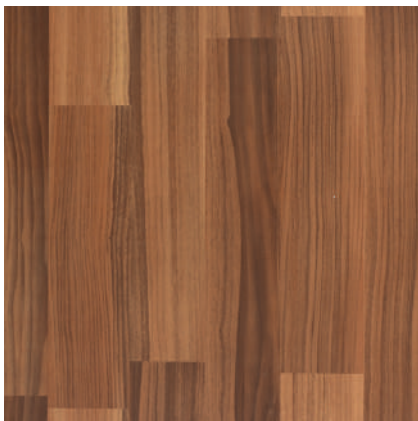
ELITE GREEN 084



ELITE GRAY 087



ELITE WOOD-085A



ELITE WOOD 086



Reduced risk of sports injury

- Excellent shock absorption quality
- International standard ball rebound
- Anti-slip for superior grip
- Foot + Knee comfort

Thickness: 4.50mm / 6.50mm

Availability: In Sheets (2.0, Roll Length: 15 linear mtr)

SALIENT FEATURES

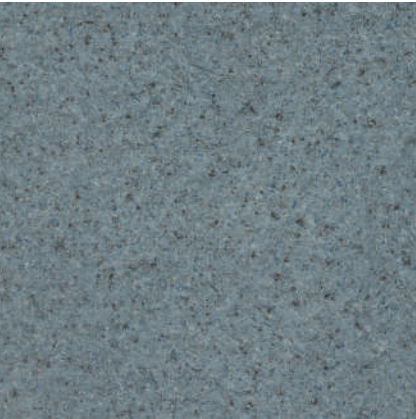
- Specially formulated high abrasion resistant wear layer
- Superior shock absorbing cushion base layer **PUR** surface protection for ease in maintenance with stain resistance
- Glass Fibre Impregnation to provide high dimensional stability
- The product is suitable for medium traffic areas
- Very good impact sound absorption
- Wear Group **T**

APPLICATION AREAS:

Multipurpose sports, fitness centres, schools, yoga centers, hospitality and multi-activity area, libraries, multi-purpose hall and auditorium



Scan this QR Code
to visit Braavo
on Wonderfloor website



FROSTY SEA BLUE



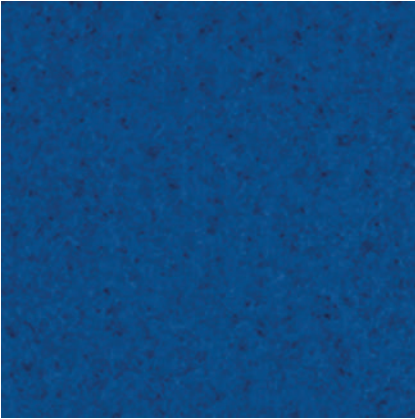
FROSTY N ORANGE



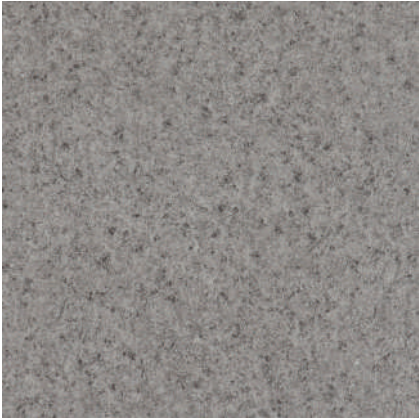
FROSTY N RED



FROSTY N YELLOW



FROSTY N BLUE



FROSTY N GREY

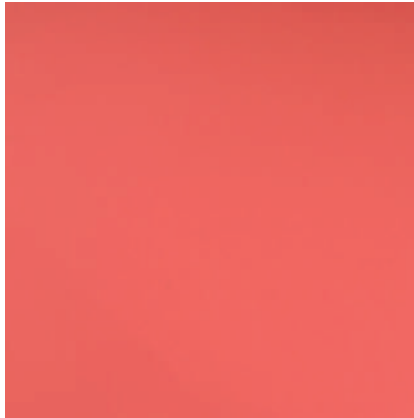


KRAYONS

School Flooring



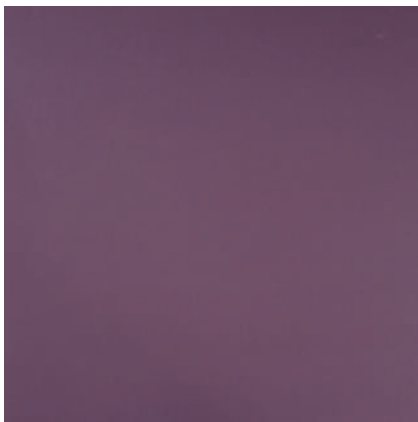
FROSTY N BEIGE



PASTEL PINK



PASTEL ORANGE



PASTEL PURPLE



PASTEL CHERRY



PASTEL BLUE



FLUORESCENT



PASTEL GREEN



PASTEL LEMON



Thickness: 2.00mm

Availability: In Sheets (2.0, Roll Length: 20 linear mtr)

SALIENT FEATURES

- Superior shock absorbing cushion base layer
- Specially formulated abrasion resistant wear layer
- **PUR** surface protection for ease in maintenance with stain resistance
- Glass Fibre Impregnation to provide better dimensional stability
- The product is suitable for medium traffic areas
- Wear Group **P**

APPLICATION AREAS:

Pre Schools, Kindergarden Schools, Fitness Centre, Schools, Yoga Centers, Hospitality, etc.

Disclaimer - Sample shown is for reference only, actual product may vary in shade and appearance.



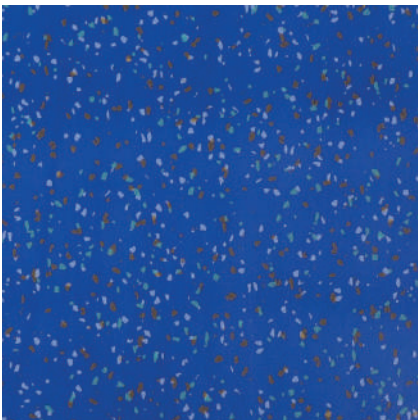
Slip resistant and impact resistant for child safety



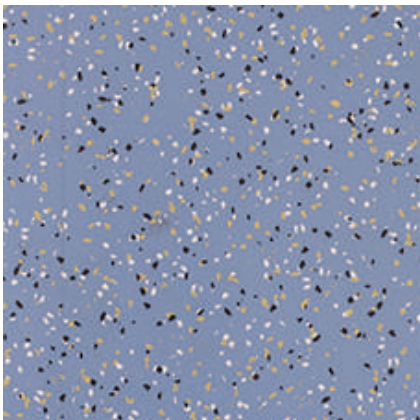
Scan this QR Code
to visit Matrixx
on Wonderfloor website



STORM BLUE

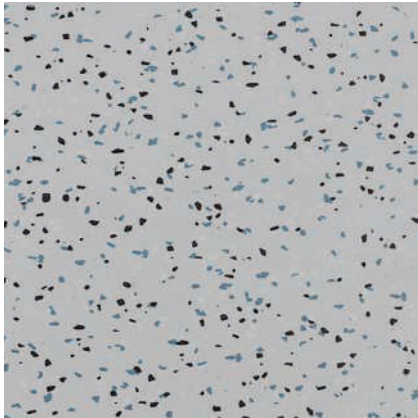


ROYAL BLUE

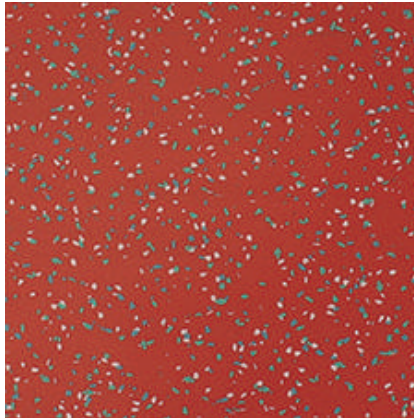


BALTIC BLUE

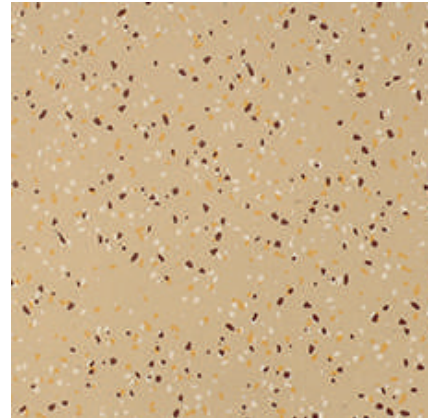




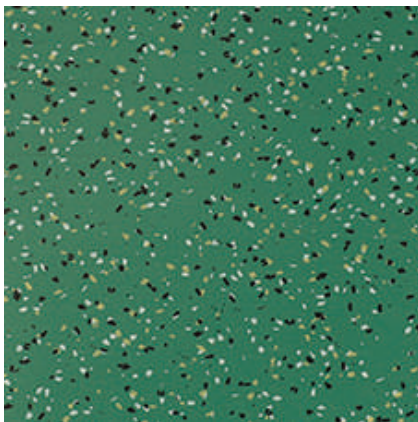
DRAPPLED GREY



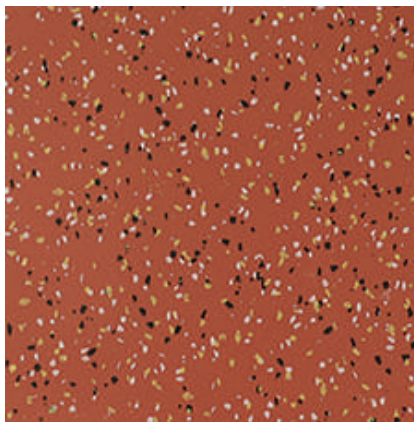
RED



SUPER BEIGE



SUPER GREEN



SUPER TERRACOTTA



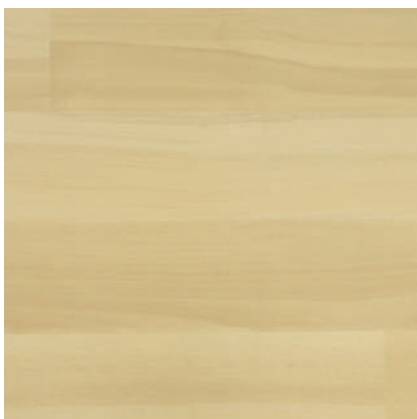
Thickness: 1.30mm
Availability: In Sheets (2 mtr x 15 mtr)

APPLICATION AREAS:
Bus Flooring and similar application

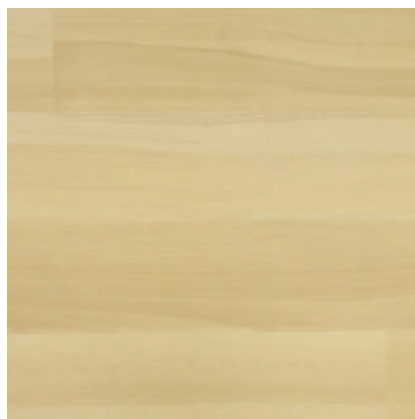
Disclaimer - Sample shown is for reference only, actual product may vary in shade and appearance.



Scan this QR Code
to visit D'ziner page
on Wonderfloor website



ASH WOOD TW 41



MAPLE WHITE TW 42

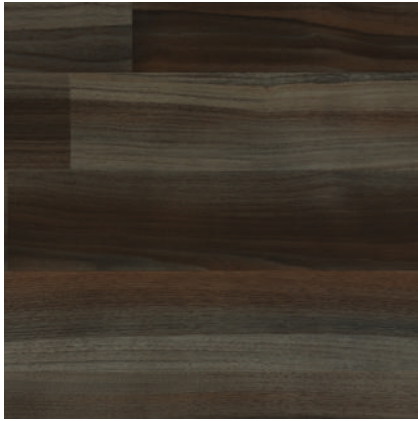


RED ALM TW 43



TRENDO DLX

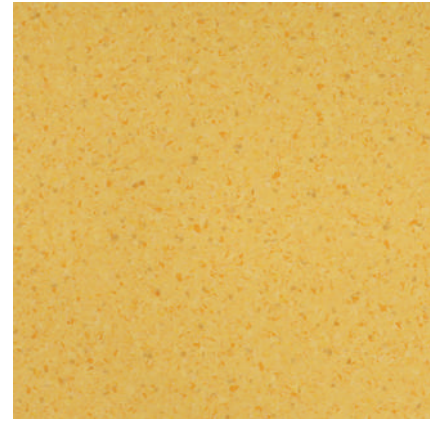
Healthcare Flooring



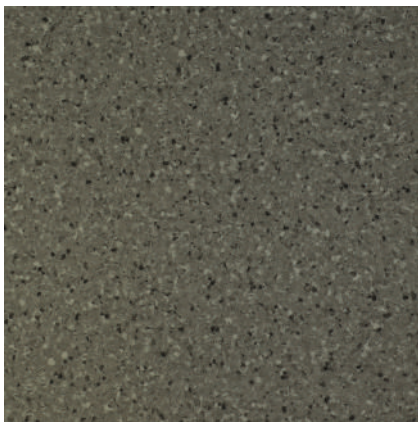
EUCALYPTUS TW 44



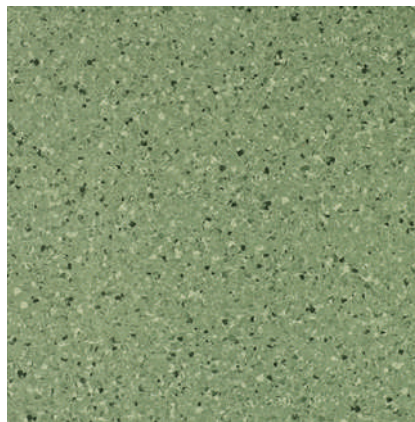
D BROWN



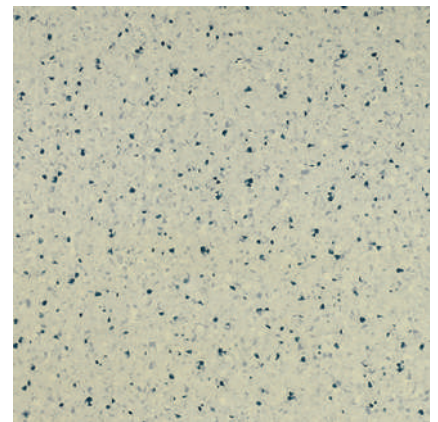
DAFFODILS



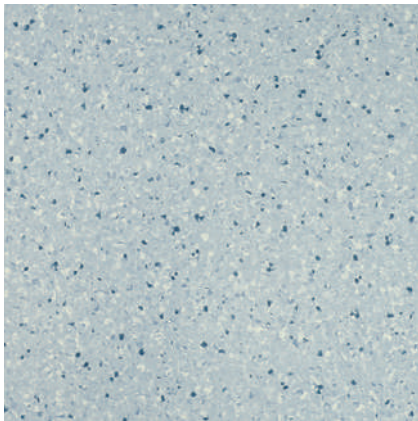
DK GREY



F GREEN



ICY BLUE



RIVER BLUE



ROYAL IVORY



S GREY



TERRACOTTA



Thickness: 2mm

Availability: In Sheets (2 mtr x 15 mtr)

SALIENT FEATURES

- Antistatic properties
- Non-directional and wood designs
- Anti bacterial and fungicidal
- **PUR** surface protection for ease in maintenance with stain resistance
- Glass Fibre Impregnation to provide high dimensional stability
- Termites and Moisture resistant
- Reduces noise impact
- High strength wear layer
- Easy to install
- Wear Group **P**

APPLICATION AREAS:

Hospitals, Libraries, Educational Institutes
Stores, Cafeterias etc



Scan this QR Code
to visit Trendo Wood page



Scan this QR Code
to visit Trendo Chips page

ORNATE

Premium Compact Flooring



551101



551102



551103



Disclaimer - Sample shown is for reference only, actual product may vary in shade and appearance.

ORNATE

Premium Compact Flooring



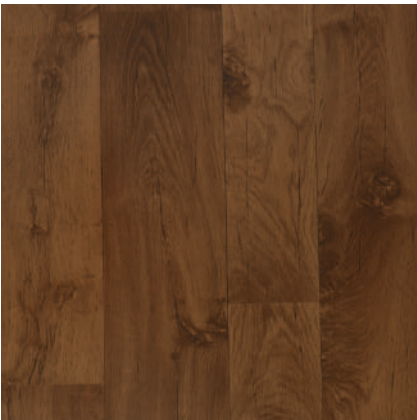
551104 



551105 




551203 



551204 



551205 



551206 



551207 



552911 



552912 



552913 



557801 

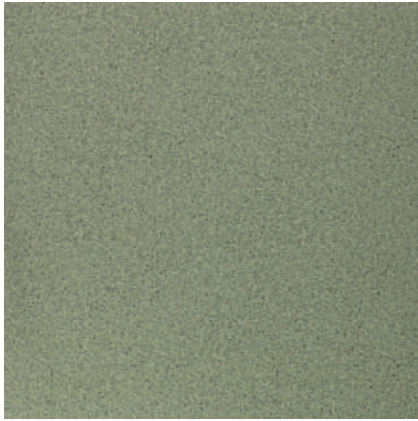


557802 

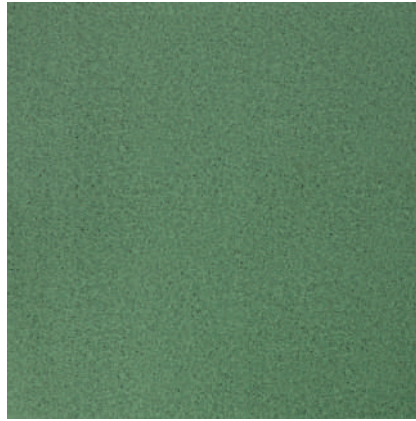
Disclaimer - Sample shown is for reference only, actual product may vary in shade and appearance.

ORNATE

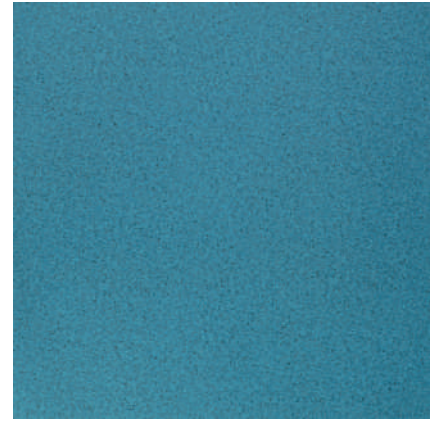
Premium Compact Flooring



557803



557804



557805



Thickness: 1.60mm / 2.00mm
Availability: In Sheets (2.0, Roll Length: 20 linear mtr)

SALIENT FEATURES

- **PUR** Surface Protection
- Anti-slippery surface texture
- Abrasion resistant wear layer
- High strength compact base layer
- These flooring are Glass Fibre Tissue (**GFT**) re-inforced for dimensional stability and strength
- High strength compact base layer

APPLICATION AREAS:

Home, Office, Light-Commercial Areas, etc.



Scan this QR Code
to visit Luxuria
on Wonderfloor website

Disclaimer - Sample shown is for reference only, actual product may vary in shade and appearance.



771701 



771702 



771703 



771704 



775103 



775105 



775106



775107



775402



775403



775404



775405



776125



776126



Thickness: 2.00mm

Availability: In Sheets (2.0, Roll Length: 25 linear mtr)

SALIENT FEATURES

- Extra soft, cozy and comfortable
- Ideal for cold climate
- These flooring are **Glass Fibre Tissue (GFT)** re-inforced for dimensional stability and strength
- Sound absorption quality
- Wood textured designs and other contemporary themes

APPLICATION AREAS:

Home and Small Offices



Scan this QR Code
to visit Luxuria
on Wonderfloor website



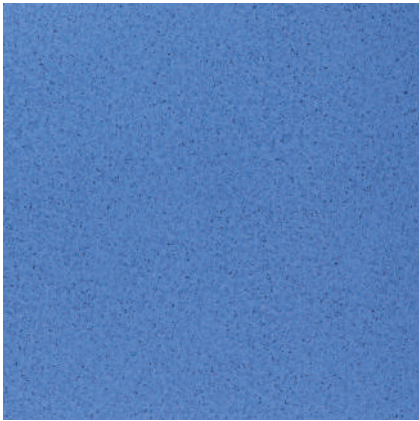
311011



311012



311013



557811



557812



557813



METEOR

Commercial Flooring



558201



558202



558203



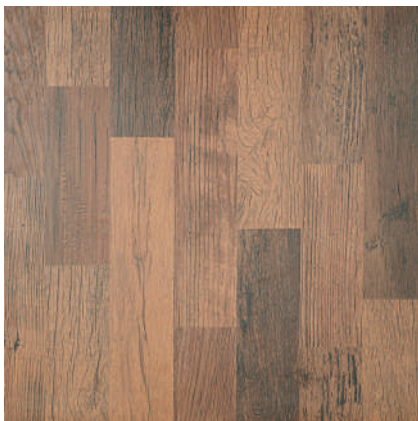
558204



559601



559602



559603



Thickness: 2mm

Availability: In Sheets (2 mtr x 20 mtr)

SALIENT FEATURES

- Meteor is wear group “P” rated flooring with slip resistance 'R9'.
- Available in wide color & shades
- High abrasion resistance
- Resistance to chemical

APPLICATION AREAS:

Ideal for moderate footfall and semi commercial applications like offices, small shops, stores, library, etc.

Disclaimer - Sample shown is for reference only, actual product may vary in shade and appearance.



Scan this QR Code
to visit Meteor page
on Wonderfloor website

ANTIQUE

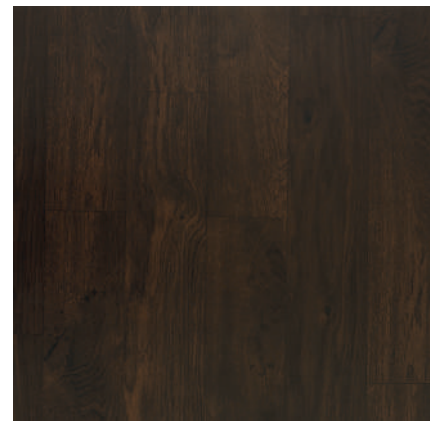
Semi Commercial Wooden Vinyl Flooring



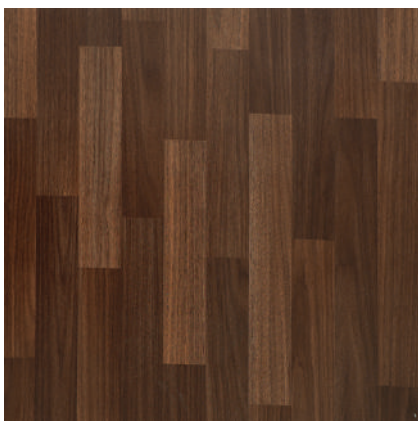
553506



553510



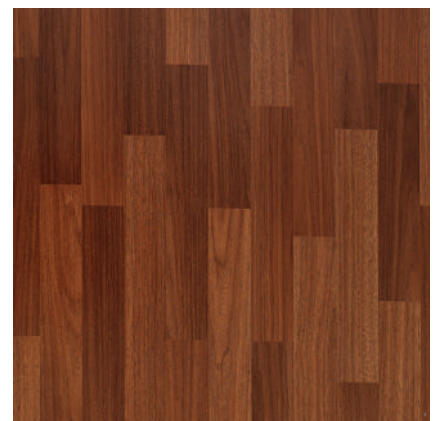
553508



554701



554702



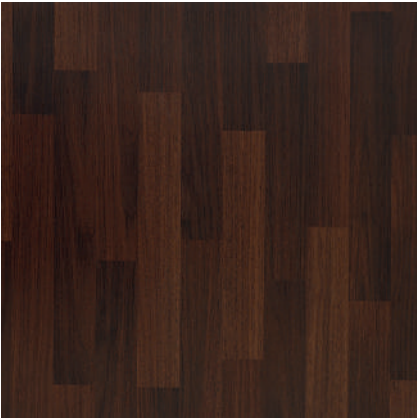
554703



Disclaimer - Sample shown is for reference only, actual product may vary in shade and appearance.

ANTIQUE

Semi Commercial Wooden Vinyl Flooring



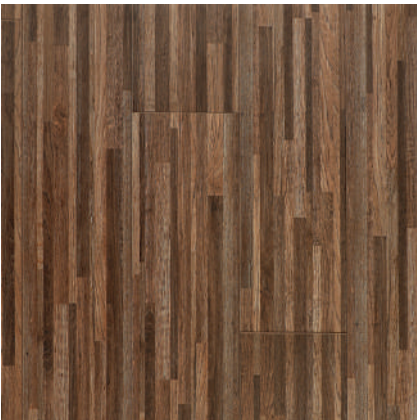
554704



554705



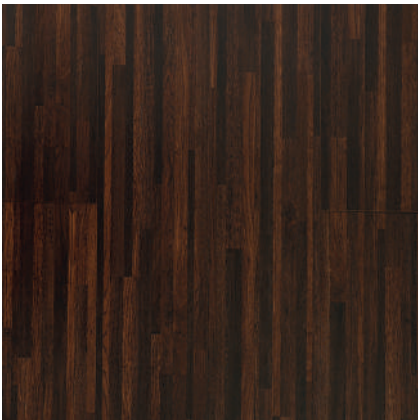
554707



555201



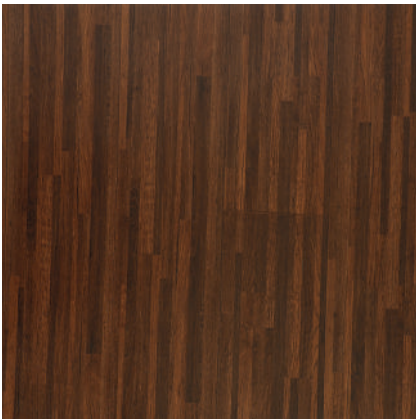
555202



555203



555204



555205



556301



556302



556303



556304



Disclaimer - Sample shown is for reference only, actual product may vary in shade and appearance.

ANTIQUE

Semi Commercial Wooden Vinyl Flooring



556305



556902



556903



556904



556905



557307



557308



Thickness: 1.50mm

Availability: In Sheets (2 mtr x 20 mtr)

SALIENT FEATURES

- It is designed to withstand high wear and tear resistance having a wear layer of 0.20 mm
- Available in wood designs
- Natural wooden surface textures

APPLICATION AREAS:

Shop, Hotels, Residences, Office, Malls, Schools, etc



Scan this QR Code
to visit Antique page
on Wonderfloor website



552402 



552403 



552405 



552701 



552702 



552705 

HITECH

Premium Printed Flooring



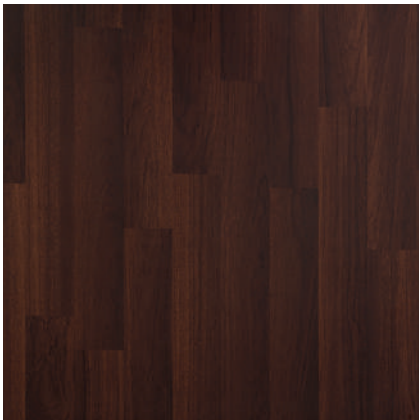
552707



553402



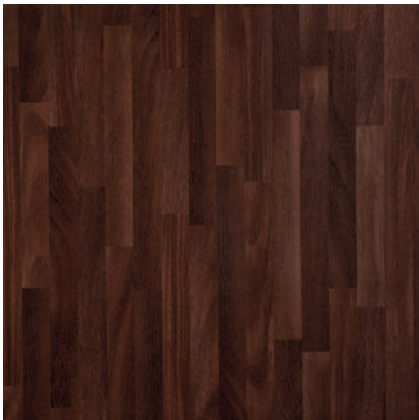
553404



553405



553406



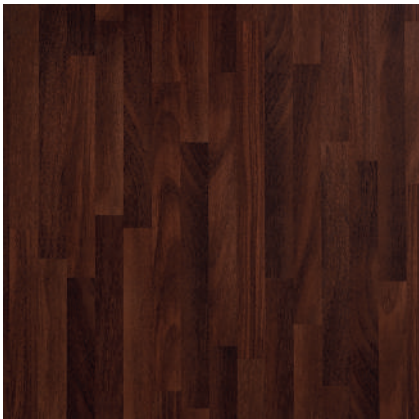
554501



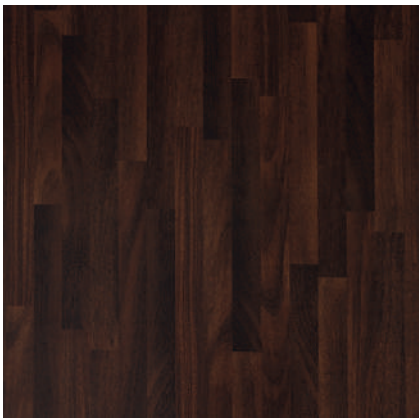
554502



554503



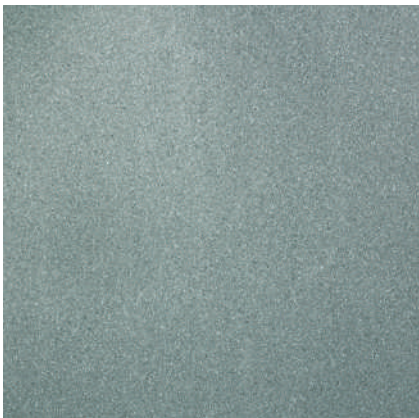
554505



554506



554911



554912



Disclaimer - Sample shown is for reference only, actual product may vary in shade and appearance.

HITECH

Premium Printed Flooring



554913



555603



555604



556801



556803



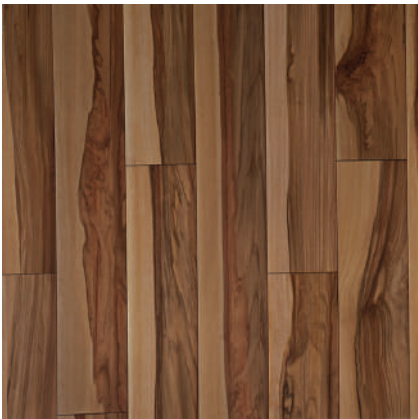
556804



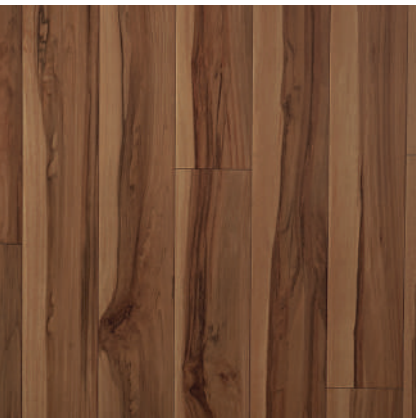
557501



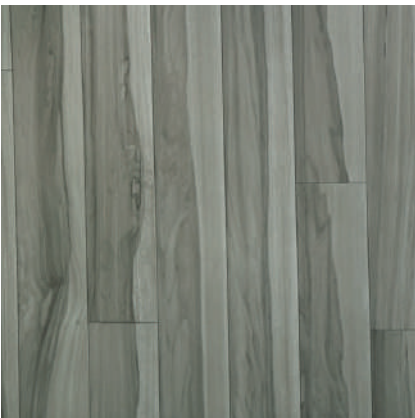
557502



557503



557504



557505



558501




Disclaimer - Sample shown is for reference only, actual product may vary in shade and appearance.


HITECH

Premium Printed Flooring




MYSTIC GREEN 558502 



MINT GREEN 558503 



TANGERINE 558504 



559501 



559502 



559503 



559504 



559505 



APRICOT ORANGE 



CANDY RED



LAWN GREEN



LEMON YELLOW



SEA BLUE

Thickness: 1.30mm
Availability: In Sheets (2 mtr x 20 mtr)

SALIENT FEATURES

- Multiple patterns: Wooden, Stone and Marble

APPLICATION AREAS:

Small offices, Residence, Small hotels & shops, Back offices in schools & Hospitals, etc.

Disclaimer - Sample shown is for reference only, actual product may vary in shade and appearance.



Scan this QR Code
to visit Hitech page
on Wonderfloor website

STONELAND MONZA

Luxury Vinyl Stone Tiles



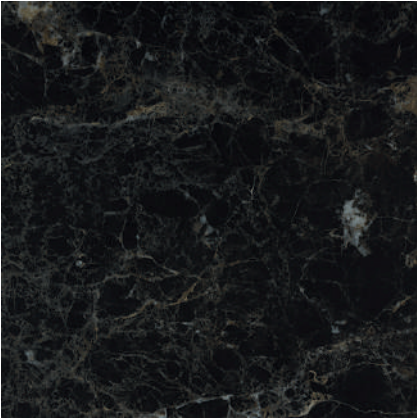
STN 01



STN 02



STN 03



STN 04



STN 05



STN 06



Disclaimer - Sample shown is for reference only, actual product may vary in shade and appearance.

STONELAND MONZA

Luxury Vinyl Stone Tiles



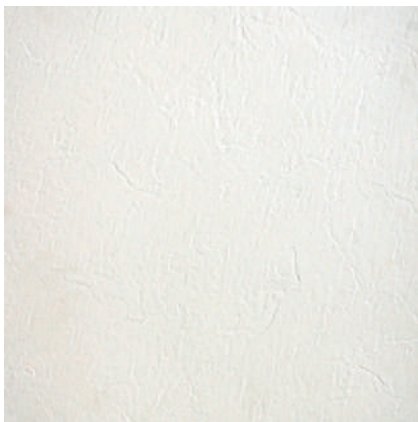
STN 07



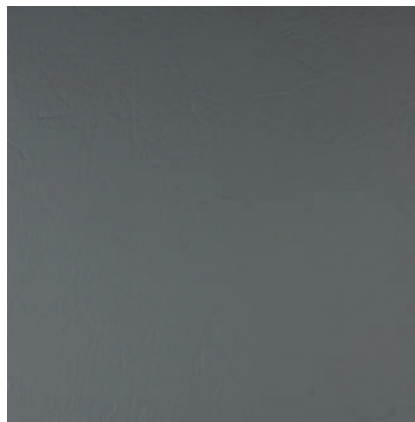
STN 08



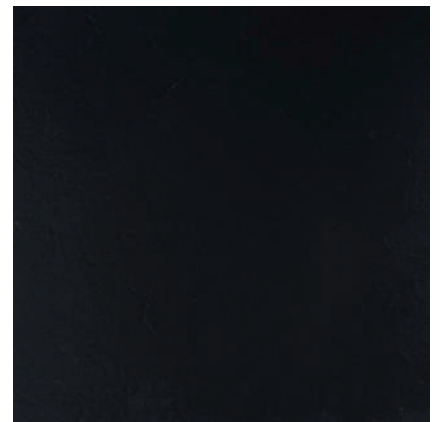
STN 09



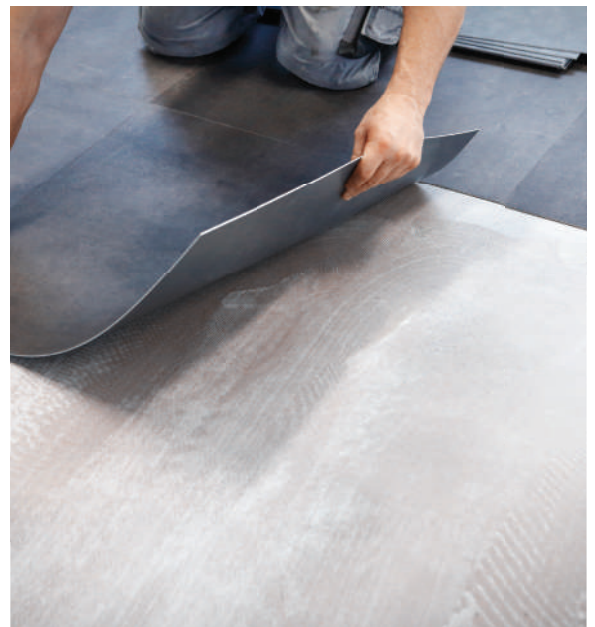
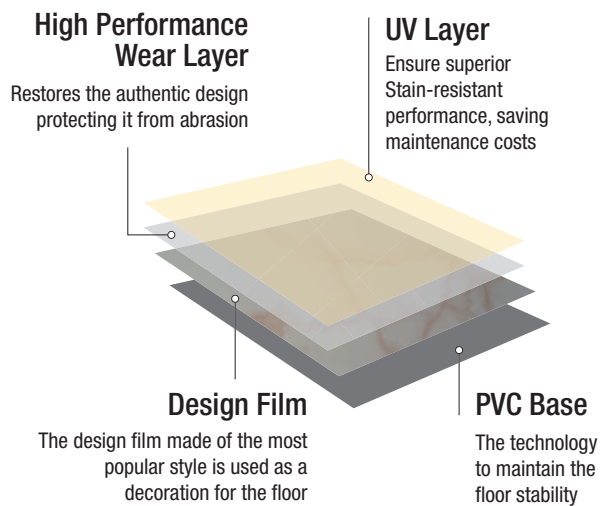
STN 10



STN 11



STN 12



Thickness: 2.00mm
Availability: 457.2mm X 457.2mm (18" X 18")**

SALIENT FEATURES

- Natural stone design
- Manufactured with multi-layer hot press technology
- Easy to install
- PUR Protection

APPLICATION AREAS:

Hotels, Restaurants, Cafeterias, Banks, Schools, Homes, Office, Retail, etc.



Scan this QR Code
to visit Stoneland Monza
on Wonderfloor website

Disclaimer - Sample shown is for reference only, actual product may vary in shade and appearance.

HERRINGBONE

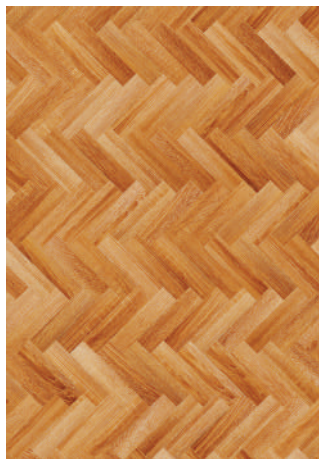
Premium Herringbone Strips



PATTERN 01



PATTERN 02



PATTERN 03



PATTERN 04



Disclaimer - Sample shown is for reference only, actual product may vary in shade and appearance.

HERRINGBONE

Premium Herringbone Strips



HBN 01



HBN 02



HBN 03



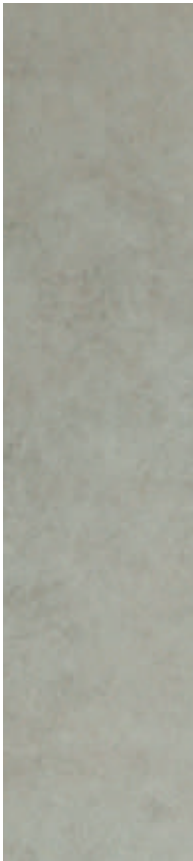
HBN 04



HBN 05



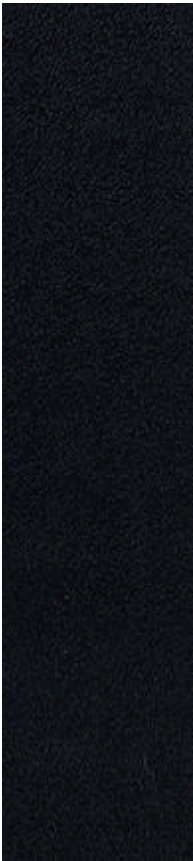
HBN 06



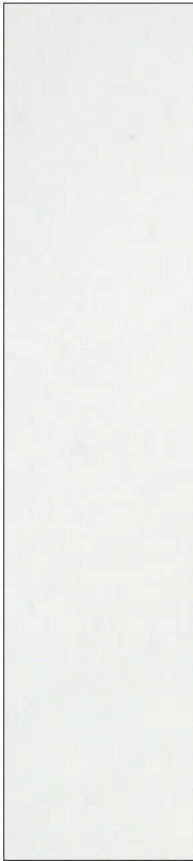
HBN 07



HBN 08



HBN 09



HBN 10

Thickness: 2.00mm
Availability: 101.6mm x 457.2mm (4"x18")

SALIENT FEATURES

- Natural wood designs
- Manufactured with multi-layer hot press technology
- Easy to install
- PUR Protection

APPLICATION AREAS:

Shops, Hotels, Residences, Offices, Mall, Schools, etc.



Scan this QR Code
to visit Herringbone
on Wonderfloor website

GRANDEURE SUPREME

Premium Luxury Planks



GS-0229



GS-0365



GS-0740



GS-1045



GS-1895



GS-3212

Disclaimer - Sample shown is for reference only, actual product may vary in shade and appearance.

GRANDEURE SUPREME

Premium Luxury Planks



GS-3411



GS-7181



GS-9018



GS-9186



Thickness: 2.00mm
Availability: 182.8 mm x 1219.2 mm (7.2" x 48")

SALIENT FEATURES

- Natural wood design
- Manufactured with multi-layer hot press technology
- Easy to install
- PUR Protection
- Suitable to handle heavy-footfall

APPLICATION AREAS:

Hotels, Restaurants, Cafeterias, Banks, Schools, Homes, Office, Stores, Retail, etc.

Disclaimer - Sample shown is for reference only, actual product may vary in shade and appearance.



Scan this QR Code
to visit Grandeure Supreme
on Wonderfloor website

Timberland Maestro

High Performance Luxury Planks



TM 01



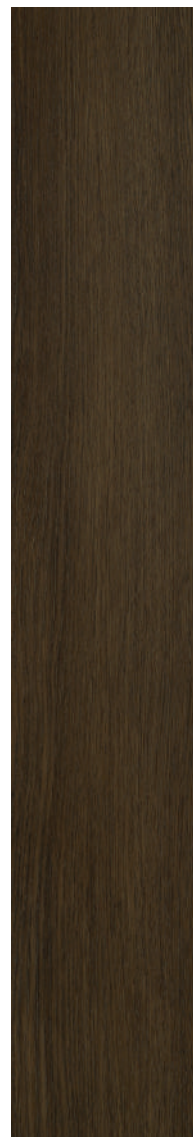
TM 02



TM 03
DUAL TONE SHADE



TM 04
DUAL TONE SHADE



TM 05
DUAL TONE SHADE



TM 06

Disclaimer - Sample shown is for reference only, actual product may vary in shade and appearance.

Timberland Maestro

High Performance Luxury Planks



TM 07



TM 08



TM 09



TM 10



Thickness: 3.00mm

Availability: 152.4mm X 914.4mm (6" X 36") / 228.60mm x 914.4mm (9"x 36")*

SALIENT FEATURES

- Natural wood design
- Manufactured with multi-layer hot press technology
- Easy to install
- PUR Protection
- Suitable to handle heavy-footfall

APPLICATION AREAS:

Hotels, Restaurants, Cafeterias, Banks, Schools, Homes, Office, Stores, Retail, etc.

Disclaimer - Sample shown is for reference only, actual product may vary in shade and appearance.



Scan this QR Code
to visit Timberland Maestro
on Wonderfloor website

TIMBERLAND EXOTICA

High Performance Luxury Planks



BEACH NATURAL
2024



BURNT WOOD
2406



OAK PREMIUM
2906



OAK WHITE
2911



NATURAL TEAK
3040



WALNUT
3062

Disclaimer - Sample shown is for reference only, actual product may vary in shade and appearance.

TIMBERLAND EXOTICA

High Performance Luxury Planks



EXOTIC TEAK
3111



HONEY OAK
3113



ENGLISH WOOD
3338



ANTIQUE
3304



CLASSIC DARK
3382



CLASSY CANE
3383

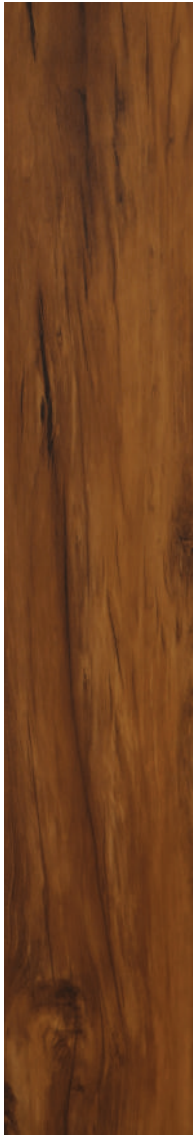
Disclaimer - Sample shown is for reference only, actual product may vary in shade and appearance.

TIMBERLAND EXOTICA

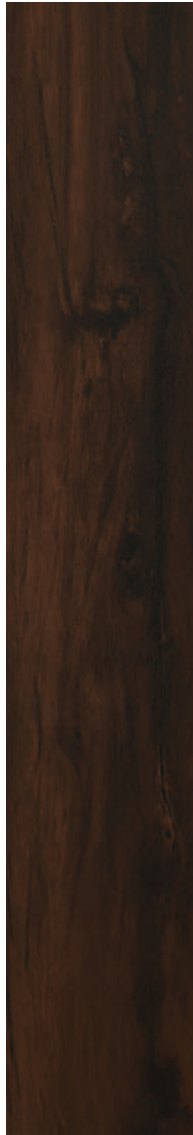
High Performance Luxury Planks



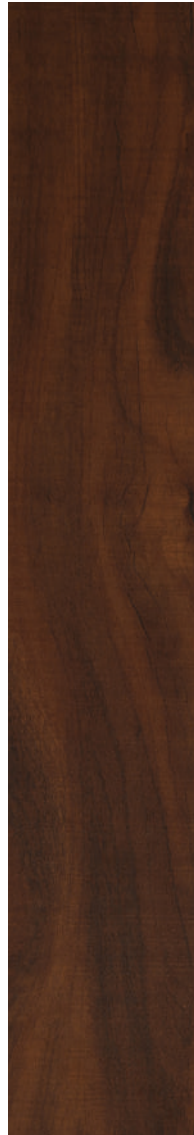
FARM OAK
3408



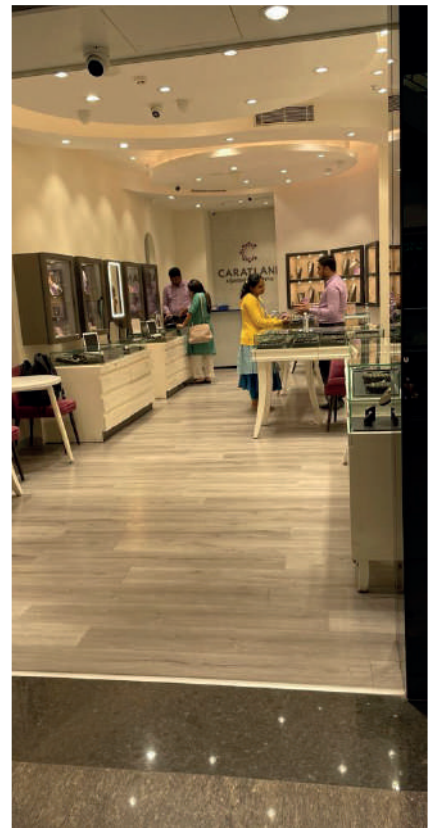
WEATHERY OAK
3571



EXOTIC WOOD
3572



CHERRY
3624



Thickness: 2.00mm

Availability: 152.4mm X 914.4mm (6" X 36") / 228.60mm x 914.4mm (9"x 36")*

SALIENT FEATURES

- Natural wood design
- Manufactured with multi-layer hot press technology
- Easy to install
- PUR Protection
- Suitable to handle heavy-footfall

APPLICATION AREAS:

Hotels, Restaurants, Cafeterias, Banks, Schools, Homes, Office, Stores, Retail, etc.

Disclaimer - Sample shown is for reference only, actual product may vary in shade and appearance.



Scan this QR Code
to visit Timberland Exotica
on Wonderfloor website

TIMBERLAND WIDEX

High Performance Luxury Planks



W-92024



W-92911



W-93040



W-93062



W-93111

Disclaimer - Sample shown is for reference only, actual product may vary in shade and appearance.

TIMBERLAND WIDEX

High Performance Luxury Planks



W-93571



W-93408



W-93338



W-92906



W-93113



Thickness: 2.00mm
Availability: 228.60mm x 914.4mm (9"x 36")*

SALIENT FEATURES

- Natural wood design
- Manufactured with multi-layer hot press technology
- Easy to install
- PUR Protection
- Suitable to handle heavy-footfall

APPLICATION AREAS:

Hotels, Restaurants, Cafeterias, Banks, Schools, Homes, Office, Stores, Retail, etc.

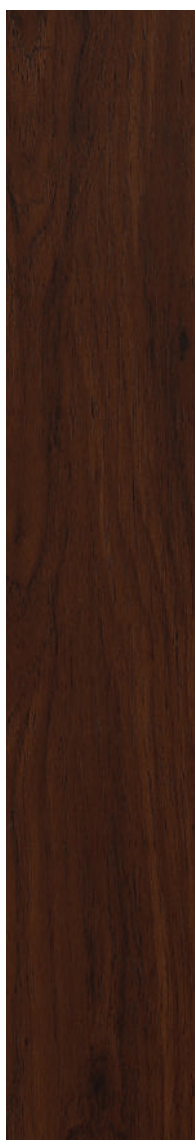


Scan this QR Code
to visit Timberland Exotica
on Wonderfloor website

Disclaimer - Sample shown is for reference only, actual product may vary in shade and appearance.



A2



A4



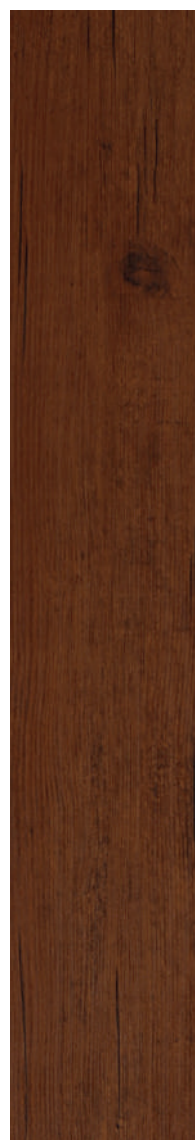
A7



B1



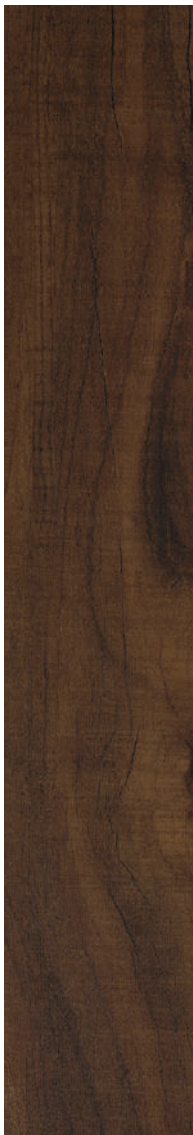
B3



B6



B8



NA1



NB2



NB4



ZA3



C6



ZA8



ZA9



ZB5



ZB7



Thickness: 1.50mm

Availability: 228.60mm x 914.4mm (9"x 36")*

SALIENT FEATURES

- Natural wood design
- Manufactured with multi-layer hot press technology
- Easy to install
- PUR Protection
- Suitable to handle moderate-footfall

APPLICATION AREAS:

Hotels, Restaurants, Cafeterias, Banks, Schools, Homes, Office, Stores, Retail, etc.

Disclaimer - Sample shown is for reference only, actual product may vary in shade and appearance.



Scan this QR Code
to visit Timberland Exotica
on Wonderfloor website

DUROFLOOR VICTOR 2.00 mm

Premium Luxury Planks



DV 0219



DV 1321



DV 2120



DV 2701



DV 3813



DV 7217

DUROFLOOR VICTOR 2.00 mm

Premium Luxury Planks



DV 7222



DV 7278



DV 7301



DV 7602



DV 9312



DV 9505

Thickness: 2.00mm

Availability: 228.60mm x 914.4mm (9"x 36")*

SALIENT FEATURES

- Natural wood design
- Manufactured with multi-layer hot press technology
- Easy to install
- PUR Protection
- Suitable to handle low-footfall

APPLICATION AREAS:

Hotels, Restaurants, Cafeterias, Banks, Schools, Homes, Office, Stores, Retail, etc.

Disclaimer - Sample shown is for reference only, actual product may vary in shade and appearance.



DUROFLOOR Premium 1.50 mm

Premium Luxury Planks



990203

990217

990356

990734

991044

991633

Disclaimer - Sample shown is for reference only, actual product may vary in shade and appearance.

DUROFLOOR Premium 1.50 mm

Premium Luxury Planks



992025



993044



994062



996565



996613



991301 A

Thickness: 1.50mm

Availability: 228.60mm x 914.4mm (9"x 36")*

SALIENT FEATURES

- Natural wood design
- Manufactured with multi-layer hot press technology
- Easy to install
- PUR Protection
- Suitable to handle low-footfall

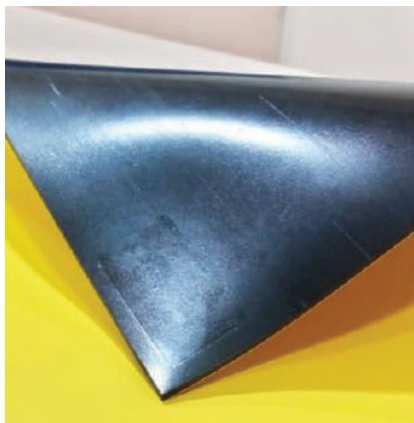
APPLICATION AREAS:

Hotels, Restaurants, Cafeterias, Banks, Schools, Homes, Office, Stores, Retail, etc.

Disclaimer - Sample shown is for reference only, actual product may vary in shade and appearance.



PVC GEOMEMBRANE



Thickness: 1.50mm / 2.0mm / 2.50mm / 3.00mm
Availability: In Sheets (2 mtr x 20 mtr)

SALIENT FEATURES

- Tensile Strength: > 17
- Elongation: 300%
- Natural wooden surface textures

APPLICATION AREAS:

Railway & Road Tunnels, Waterproofing of Bunkers, Basements of Factories/ Malls, Roof Waterproofing, Artificial Lakes / Ponds, Aqua Farming, Irrigation Canals, Sewage Treatment Plants, Overhead WaterTank Liner, etc



Scan this QR Code
to visit Geomembrane page
on Wonderfloor website

Disclaimer - Sample shown is for reference only, actual product may vary in shade and appearance.

SWIMMING POOL LINER



PVC WALL PAPER

Self-adhesive vinyl wallpaper



SALIENT FEATURES

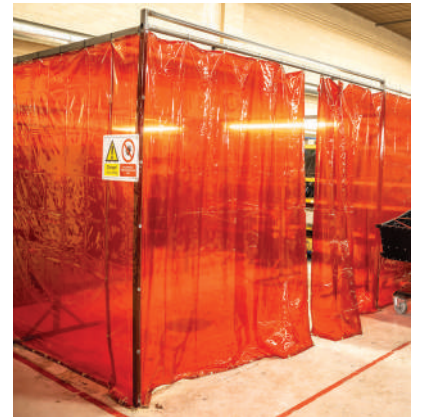
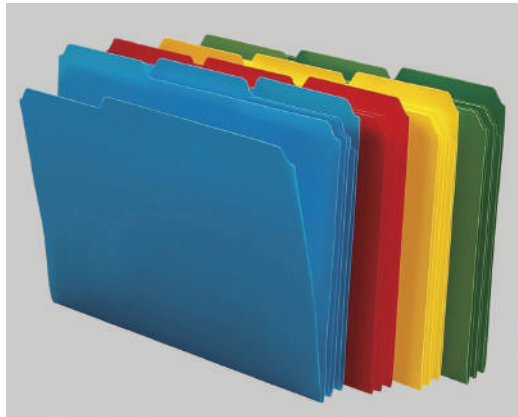
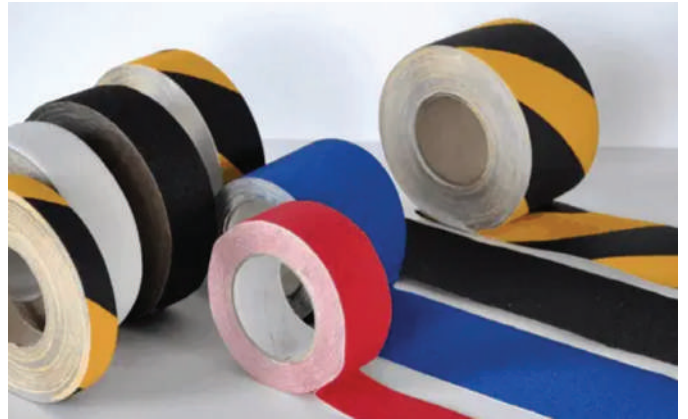
- 1000+ Designs (Stone, Marble, Geometrical, Decorative etc.)
- Self-Adhesive
- Natural wooden surface textures
- Stain Free
- Exceptional Quality
- Easy to remove
- Water-proof
- Made in India

APPLICATION AREAS:

Shop, Hotels, Residences, Office, Malls, Schools, etc

Disclaimer - Sample shown is for reference only, actual product may vary in shade and appearance.

PVC SHEETINGS



SALIENT FEATURES

- NON TOXIC
- FR GRADE
- Furniture Film
- Hospital & Shower Curtains
- Welding Curtains
- Urine Bags
- Tool Kit
- Industrial Tape
- Stationary Sheeting
- All types of PVC Sheetings

APPLICATION AREAS:

Shop, Hotels, Residences, Office, Malls, Schools, etc

Disclaimer - Sample shown is for reference only, actual product may vary in shade and appearance.

PVC LEATHER CLOTH



SALIENT FEATURES

- Fire Safety Standard: ASTM, EN, IS CRIB-5, EN-45545/HI-2
- Non-Fading - UV Resistance
- 10°C Cooler Stay Cool
- Super Anti-Slip
- Stay Clean
- Acoustic Properties
- **Application areas:** Upholstery for Buses, Trains, Cars, 2 Wheelers, Boats & Marine applications

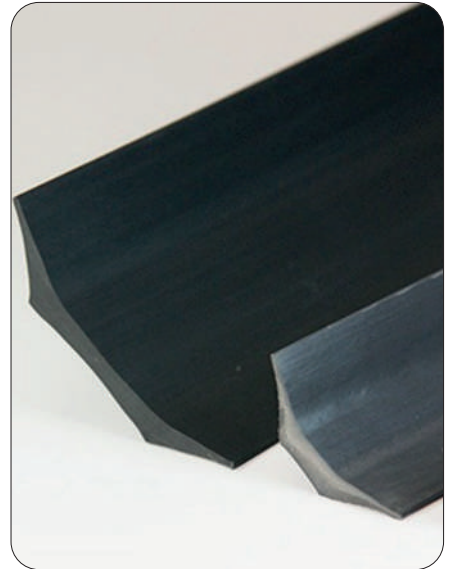
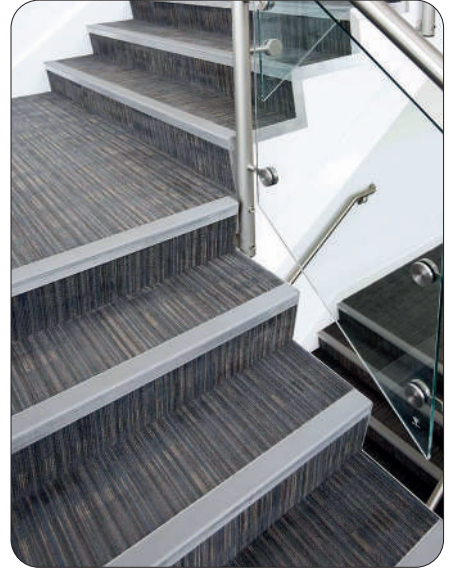
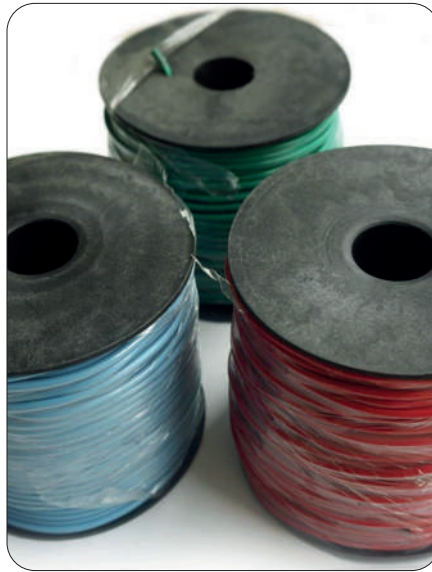
These are artificial leather made from PVC and is used for upholstery of seats for Buses, Trains, Cars & 2 Wheelers. We produce qualities which are UV resistant and suitable for Boats & Marine applications. Also produced are qualities suitable for Buses & trains which are having low smoke & Fire Retardant properties. Several qualities are produced suitable for heavy to light duty use with a range of fabric backings to suit specific tear & stretch requirements or to meet tight commercial budgets. Products are available in a wide range of thickness, embossing patterns and colours and are produced meeting REACH requirements.



Scan this QR Code
to visit PVC Leather Cloth
on Wonderfloor website

Disclaimer - Sample shown is for reference only, actual product may vary in shade and appearance.

INSTALLATION ACCESSORIES



Wonderfloor provides complete range of accessories for installation of their flooring products

Hot Air Welding Gun: Welding gun flows a hot gas (air) to melt welding rods. We supply welding with its complete accessories like Grooving knife (to make "V" shaped groove between two edges of floors) and Spatula (required to remove excess welding over the floor surface)

PVC Welding Cords: PVC welding cords are used for smooth installation of floor covering. Wonderfloor welding rods are available in a range of colours designed to blend with the floor coverings.

PVC Stair Nosing: PVC Stair Nosing help to reduce accidents on stairs by offering increased slip- resistance.

PVC Skirting: Skirting can help define where the floor ends and the wall begins whilst providing a neat, attractive join between the wall and the floor.

PVC Capping: PVC Capping strip gives a neat finish to the installation and ensures a continuous, sealed surface.

PVC Coving: These tough and durable covings give protection to the wall decorations at floor level.

PVC Corner Guard: PVC corner guards protect exposed and vulnerable corners against the roughest treatment.

Disclaimer - Sample shown is for reference only, actual product may vary in shade and appearance.

OUR CLIENTS





WONDERFLOOR

RMG POLYVINYL INDIA LIMITED

Corporate Office : UGSR 4, Ansal Plaza, Sector 1, Vaishali Ghaziabad 201 010, (U.P) INDIA
 Tel.: +91 120-4284802/803/804/805/806. Fax: +91 11 66173679
 E-mail: info@rmgpoly.com, Website: www.wonderfloor.co.in

WONDERFLOOR is the registered Trade Mark of RMG Polyvinyl India Limited.



When you install Wonderfloor products you are helping nature by minimizing the usage of wood and natural stones. Our floorings are recyclable which contribute towards conserving nature.