

Antiskid/Transport Vinyl Flooring



Made in India

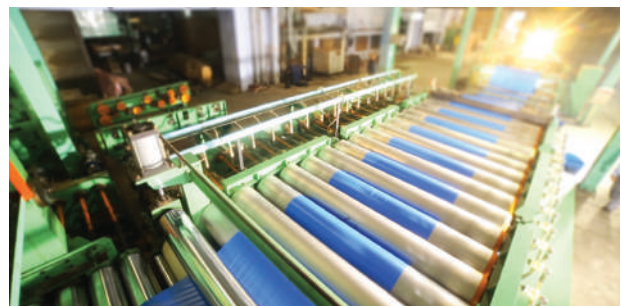


RMG Polyvinyl India Limited, an ISO 9001:2015 systems approved company and is one of the largest manufacturer and exporter of PVC Floor Coverings in India with annual production in excess of 40,000MT (27 Million Sq meters) of residential & heavy duty floorings. Winner of Top Export Award for PVC floor Coverings since several years, the products are exported to Asian countries, Europe, Gulf, Africa and the Americas.

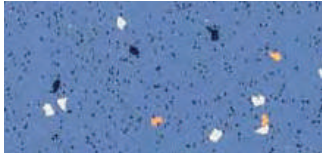
RMG's state-of-the-art plant is located at Sikandarabad (UP) in the Delhi NCR region, the capital of India. The factory boasts of modern calendaring, LVT & cushion vinyl lines to deliver the widest range of flooring products which meet international requirements for abrasion, low smoke & fire retardant properties.

The factory also produces PVC leather, PVC Films & PVC Geomembranes.

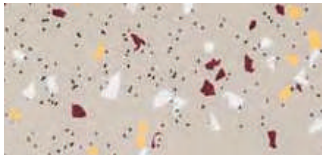
RMG's flooring is marketed in India and overseas under the flagship brand WONDERFLOOR. The Wonderfloor product range includes floorings for home interiors, offices, education, healthcare, factories, buses & rail coaches, aerobridges, supermarkets, porta cabins, prefabricated shelters and almost all interior applications.



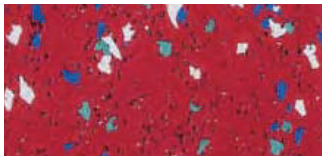
Regular colour range



Shatabdi Blue



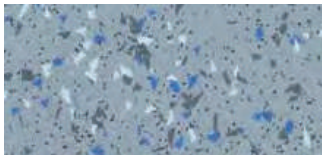
S R Beige



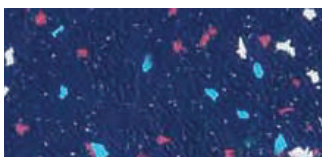
Crimson Red



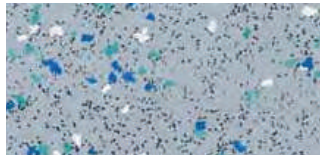
Sparkle Blue



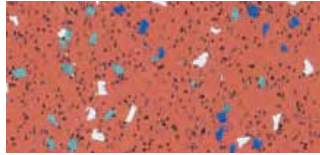
K. L. Grey



N. Blue



EC Grey



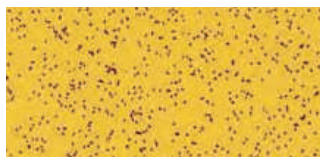
Terracotta



Sparkle Grey



Sandy Brown



Sparkle Yellow



Sparkel Red

Thickness: 1.0 / 1.5mm / 2.0 mm / 3.0mm
 Roll Width: 2.0 / 1.50 mtr
 Roll Length: 20 / 15 linear mtr
 Tile Size: 300 X 300 / 305 X 305 / 610 X 610

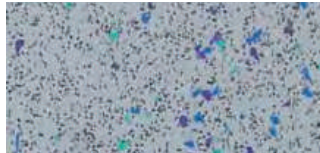
TRACTION | Transport Floorings

These are special floor covering embedded with Silicon Carbide (Carborundum) grains on the top surface which provide very high slip resistance rating. Due to a superior PVC content and Silicon Carbide Grains, Traction flooring is able to withstand very high abrasion and are most suitable for areas where there is heavy footfalls and anti-slip properties are required like Buses, Trains, Ramps, Wet Areas, etc.

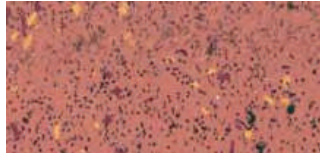
Salient Features

- Produced as per ISO requirements and with Fire & Smoke emission requirements which are most important for the transport industry
- **Product is "T" rated due to its very high abrasion resistance properties**
- Slip Resistance of R11 & R12 can be achieved depending upon the top embossing selected
- Available in Plain colours or with Multi Coloured Chips and also with Glass Scrim Reinforcement for very high Dimensional Stability
- Application Areas: Transport sector like Buses, Trains, Lifts, Loading Ramps, Walk ways, Wet Areas, etc





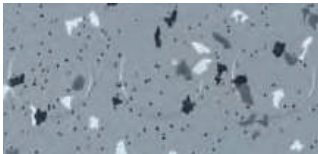
Grey



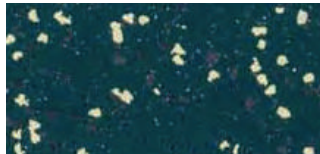
Rust

Thickness: 1.0 / 1.5mm / 2.0 mm / 3.0mm
Roll Width: 2.0 / 1.50 mtr
Roll Length: 20 / 15 linear mtr
Tile Size: 300 X 300 / 305 X 305 / 610 X 610

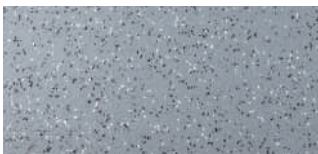
TRACTION | Transport Floorings



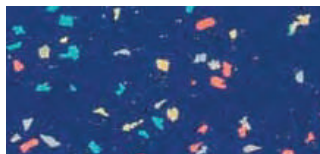
Pinnacle Grey



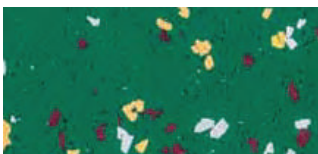
D. K. Green



Silver Grey



Royal Blue

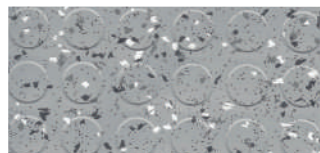


Parrot Green



Green

Note: To achieve R-12 slip resistance on Traction floorings, we recommend to use our Matrixx embossings on top surface



ISO 9001:2015
www.siv.com
ID 910867206





EMB 147



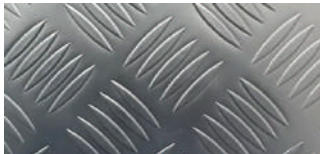
EMB 160



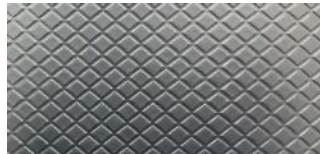
EMB 195



EMB 216



EMB 220



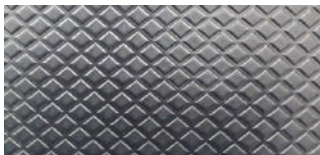
EMB 250



EMB 253



EMB 254



EMB 255



EMB-256



EMB 259



EMB 407



EMB 468



EMB 475



EMB 478



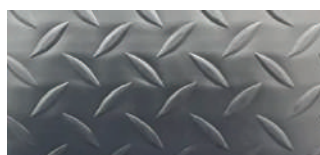
EMB 480



EMB 484



EMB 485



EMB 499

Thickness: 1.0 / 1.20 / 1.5mm / 2.0 mm / 3.0mm
 Roll Width: 2.0 / 1.50 mtr
 Roll Length: 25 / 20 / 15 linear mtr

MATRIX | Transport Floorings

Matrix Embossed Flooring is meant to provide extra grip for safe movements. It is available in a wide range of deep embossed designs which provide a surface which enhances slip resistance. Attractive patterns like Coin, Chequered Plate, Dew Drops, Hexagon, Diamond, etc are some of the hot favourites among our customers.

Salient Features

- Available in solid colours with homogeneous or heterogeneous type in various embossing on the top layer in pleasant metallic colours, like aluminium, copper, gold, etc or in solid colours like Black, Red, Yellow, etc
- They are 'M' or 'P' rated depending upon the thickness and have a slip resistance of R10
- Product is suitable for sale in Europe and fire safety approvals have been obtained from European labs
- Choice of Colour may be customized on the basis of customer preference
- Matrix is also available with polyester non woven or jute backing which provides enhanced sound and thermal insulation
- Trains, Lifts, Loading Ramps, Walk ways, Wet Areas, etc





Black



Sand Stone

MATRIX | Transport Floorings

MATRIX Embossed Floorings are available in the following colours



Dk Grey



Almond Brown



Terracotta



Grey



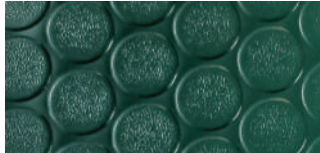
Forest Green



Sky Blue



Lt Grey



Green



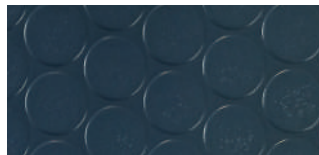
Blue



Silver



Brown



Ocean Blue



Pearl White



Maroon



Yellow



White



Brick Red



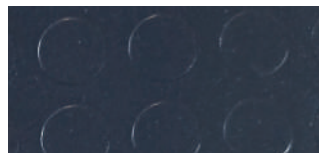
Sparkle Dk Grey



Beige



Red



Sparkle Grey



ISO 9001:2015
www.siv.com
ID 910837206



Installed at:

- Warehouses • Locker rooms • Kitchen • Stairs & Ramps • Exhibition Halls • Transport Busses • Lifts and
- Parking Garage



PERFORMANCE CHARACTERISTICS

CHARACTERISTICS	TEST METHOD	TRACTION	MATRIX
THICKNESS (mm)	EN 428 / ISO 24346	1.00 / 1.50 / 2.00 / 3.00	1.00 / 1.20 / 1.50 / 2.00 / 3.00
ROLL WIDTH (mtr)	EN 426 / ISO 24341	2.0 / 1.50	2.0 / 1.50
ROLL LENGTH (mtr)	EN 426 / ISO 24341	20 / 15	25 / 20 / 15
TILE SIZE (mm)	EN 427	300x300 / 305x305 / 610x610	NA
TOTAL WEIGHT (kgs/sq mtr)	EN 430 / ISO 23997	1.8 / 2.70 / 3.60 / 5.40	1.80 / 2.20 / 2.70 / 3.60 / 5.40
SURFACE PROTECTION	PUR	SILICON CARBIDE	OPTIONAL
SLIP RESISTANCE	DIN 51130 / ASTM D2047	R11 & R12	R10
HYGIENE / CLEAN ROOM TEST	ISO 14644-1	Inhibits Growth of Microbes, Class A	Inhibits Growth of Microbes, Class A
RESIDUAL INDENTATION (mm)	EN 433 / ISO 23343-1	≤ 0.10 mm	≤ 0.10mm
FLEXIBILITY (mm)	EN 435 / ISO 24344	40 mm MANDREL. PASS	40 mm MANDREL. PASS
DIMENSIONAL STABILITY (%)	EN 434 / ISO 23999	≤ 0.40%	≤ 0.40%
BEARING CASTOR CHAIR	EN 425 / ISO 4918	SUITABLE / CONTINUOUS - NO DELAMINATION	SUITABLE / CONTINUOUS - NO DELAMINATION
ELECTRICAL RESISTANCE (Ω)	EN 1081	ANTISTATIC	ANTISTATIC
RESISTANCE TO CHEMICALS	ASTM F925	NO VISIBLE CHANGE - PASS	NO VISIBLE CHANGE - PASS
REACTION TO FIRE (kw/m ²)	EN ISO 9239-1	Bfl-S1	Bfl-S1
PERFORMANCE CLASSIFICATION	EN 685 / ISO 10874	34, 43	33, 34
ABRASION RESISTANCE	EN: 660-2	WEAR GROUP T	WEAR GROUP P
SOUND ABSORPTION	ISO 140-8/EN ISO 717-2	Δ LW = 5db	Δ LW = 5db
THERMAL RESISTANCE (m ² k/w)	EN 12664 / ISO 8302	<0.00568 - PASS	<0.00568 - PASS
STAIN RESISTANCE	EN 423 / ISO 26987	1, VERY GOOD RESISTANCE	1, VERY GOOD RESISTANCE
COLOUR FASTNESS	ISO 105-B02	> BLUE WOOL STANDARD 5	> BLUE WOOL STANDARD 5
MARITIME USAGES		SUITABLE	SUITABLE



MAINTENANCE

Do's: • After laying of flooring, the surface should be cleaned daily with damp mop and weekly or fortnightly with soap solution • Prevent point load indentation by covering your furniture legs with rubber stopper caps • To remove stubborn stains, rub the affected area immediately with a soft coir brush or fine steel wool soaked in a warm soap solution • Scuff marks on the floor can be removed with little application of diesel • Use door coir or suitable mats to minimize accumulation of dust on Wonderfloor vinyl flooring • Use water to remove any chemical spill on flooring.

Don'ts: • Do not use any strong detergent, harsh cleaning agent or dry steel wool • Throwing of lighted cigarette butts or match sticks on the floor should be avoided as it could lead to burn marks on the floor • Do not drag any heavy object or furniture on the flooring to avoid scratches on the floor.

For institutional/bulk enquiries, please e-mail : mkt@rmgpoly.com

or call : +91 9711200510

For export enquiries, please e-mail : info@rmgpoly.com

or call : +91 9873138885 / +91 9953208740

RMG POLYVINYL INDIA LIMITED

Registered Office : UGSR 4, Ansals Plaza, Sector 1, Vaishali Ghaziabad 201 010, (U.P) INDIA. Tel.: +91

120-4284802/803/804/805/806.

Fax: +91 11 66173679. E-mail: info@rmgpoly.com

Regional Offices :

- Ahmedabad • Bangalore • Bhubaneswar • Chennai • Chandigarh • Guwahati • Hyderabad • Indore • Kolkata • Kochi
- Lucknow • Mumbai • Pune • Patna

WONDERFLOOR is the registered Trade Mark of RMG Polyvinyl India Limited www.wonderfloor.com

